

ACCESS **IN** ACTION

OFFICIAL PUBLICATION OF THE ELEVATING WORK PLATFORM ASSOCIATION OF AUSTRALIA INC



HTA 16P

Simple, rugged and versatile

Haulotte

phone 1300 207 683

www.haulotte.com.au

INSIDE THIS ISSUE

- 26 Unfair Contracts – Guidance Note now available
- 28 Need a crane load on the roof? Now you can
- 36 New branch for All Lift Forks
- 40 How one Victorian company is reusing equipment
- 41 Toyota Bravis picked up in La Trobe Valley
- 42 Tyres on Telehandlers – TSHA Alert



EWPA

www.ewpa.com.au

president's message

It's all about working for members and our industry

Now the crazy season is over it's a bit of a shock we are already well into the 2017.

Looking back over 2016 it was quite a busy year as far as the EWPA was concerned. We managed to finalise a number of projects we have been working on, including:

- Super boom training
- Registered Inspector program
- Revision and update of several guidance documents (these can be found one click away from our home page www.ewpa.com.au using the blue tab 'Information Sheets').

Several EWPA members have been working on the revision of AS1418.10, so we thank them for their efforts and we are represented at an International level on the technical committee looking at the standardisation of controls.

During the past year, we also started to build bridges with associations from New Zealand, USA and Europe. Logically this makes sense as we are all working toward the same goal of producing safe machines, educating the users on correct machine selection and use and ensuring the equipment is maintained correctly. For example, we are more than happy to help our colleagues in New Zealand with any programs we have been working on, such as the Registered Inspector program and we are about to launch the Super Boom training program which will be relevant to all users of the largest booms now available in the market. We are also excited to be working on the MEWP Supervisors course which Europe has had great success with and I know for certain it will be well received here in Australia.

The team at Mona Vale is already working with the various State committees planning events for the coming year. It became quite evident during the year the most successful meetings are those located at a members' facility and are even better if combined with a speaker or event.

We have also had some excellent joint meetings with the HRIA. This brings together the rental companies and the access industry in one location with the benefits being increased attendance, more networking, sharing of knowledge and opportunities to discuss the latest developments affecting industry.

If you would like to host a meeting, please get in touch with your State President or the EWPA National office (02 9998 2222). They'll ensure invites are sent out, catering is organised and the meeting formalities are all taken care of. Having spoken to members who have hosted meetings during the year it was pleasing to hear nothing but positive feedback. It is a chance to really showcase your business and have people attend who might not otherwise know what your business can offer in the way of products and services.

Later this year, HIRE17 will be showcasing new technology, products and services, keeping delegates together with two full days of conference, equipment display and tailored networking events. I look forward to seeing as many of you there as possible at this important annual event. The event is well-supported by the access industry and will take place from 10-11 May 2017 at Rosehill Gardens, Sydney. The Conference program has been designed to include plenty of time to meet with industry colleagues, including meal breaks in the exhibition area, a conference welcome party, ClubHire after parties and the Hire Industry Excellence Awards and Gala Dinner - so please be sure to register soon.

Best wishes to all EWPA, TSHA and HRIA members for a safe and prosperous 2017.

Rick Mustillo
EWPA President



Rick Mustillo



EWPA

ACCESS IN ACTION

FEBRUARY 2017
VOL18 NO 3

ELEVATING WORK PLATFORM ASSOCIATION OF AUSTRALIA INC ABN 32 545 830 419

EWPA
BOARD OF DIRECTORS

President: Rick Mustillo
Tel: 02 9817 7610

Vice President: Mitch Ely
Tel: 07 3456 4508

Past President: Tim Nuttall
Tel: 03 9547 7700

Chief Executive Officer: James Oxenham
Tel: 0410 704 979

Operations Manager: Nicolas Chiew
Tel: 0410 468 468

NSW President: John Glover
Tel: 02 9735 7600

VIC President: Tim Hille
Tel: 03 9555 1116

QLD President: Richard Gannon
Tel: 07 3277 7255

SA President: Ben Pritchard
Tel: 08 8262 1000

WA President: Will Reilly
Tel: 08 9456 4400

TRAINING DIRECTOR
Phil Middleton
Tel: 02 9622 6060

TECHNICAL DIRECTOR – ENGINEERING
Peter Davis
Tel: 02 8796 50551

TECHNICAL DIRECTOR – OPERATIONS
Peter Wenn
Tel: 03 9568 7211

COMMITTEE

Dean Halliwell
Tel: 02 9623 3329

Bob Mules
Tel: 02 8718 6300

Doug Rawlings
Tel: 08 9350 5700

Keith Clarke
Tel: 03 9792 1000

TELESCOPIC HANDLER ASSOCIATION OF AUSTRALIA (TSHA)

PRESIDENT: Chris Taylor
Tel: 02 9609 4653

EWPA & TSHA

PO Box 1304, Mona Vale NSW 1660

Tel: 02 9998 2222

Fax: 02 9998 2299

Email: info@ewpa.com.au Web: www.ewpa.com.au

Opinions published in the Hire and Rental Industry Association magazine – Hire and Rental News – do not necessarily reflect the opinions of the association or the Editor. The HRIA accepts no responsibility for the accuracy of any information contained in this magazine and readers should rely upon their own enquiries in making decisions related to their own interest.

The contents of this publication are subject to copyright and cannot be reproduced in any way or form without written consent from the Editor.

All rights reserved. ISSN 1838-1197



CIRCULATIONS
AUDIT BOARD

6,533 (Audit
period Sept 2016)
CAB Member
since March 2010

hot topics

- 26 Aspac's 'Nomadic Skylift' launched
- 28 New crane to roof solution now available
- 32 Access Sales & Spares partner with Merlo
- 34 Fuel electric Genie articulating boom cuts costs
- 36 All Lift Forks opens new Melbourne branch
- 38 Workplace ladders upgraded to safer option
- 40 A new use for old hire equipment – Reuse!
- 42 ALERT – Tyres on telehandlers



26

Aspac's Kronos has a walking chassis

on the cover

Trailer mounted boom lifts from Haulotte

Trailer mounted boom lifts from Haulotte Group raise the bar and redefine how all trailer mounted boom lifts are measured. Trailer mounted booms have many advantages over other traditional aerial and scissor lifts because they provide more versatility, are easier to transport and offer the most reach for the least cost.

Innovation, customer proximity, and local presence worldwide have allowed Haulotte Group to become a global manufacturer of people and material lifting equipment. With the acquisition of BilJax, the Haulotte product line has expanded to include scaffolds, trailer mounted boom lifts and event staging and seating.

Visit: www.haulotte.com.au



32

Access Sales & Spares has taken on the Merlo Melbourne Dealership (Telehandlers)

Haulotte

NEW STAR 6
THE WAIT IS OVER
AC POWERED ⚡

Nomadic Skylift launched in Australia

Aspac has launched Kronos, a 'Nomadic Skytower' with a walking chassis and aerial sky lift which it claims reinvents the concept of all terrain and extreme access gear.

First introduced in Germany in March 2016 by Teupen Germany, the Kronos is compact and has a low transport weight of 17500kg, vertical reach of 43m, horizontal outreach of 16.4m and load capacity up to 400kg.

It offers gradeability in every kind of terrain, including slope angles of up to 17°. In rough terrain, the Kronos can reach driving speeds up to 10kph, using its 157hp Deutz diesel engine which features a 430 litre tank.

With a 230V (EU) power outlet in the ergonomically shaped basket with eyelets for safety belts and tool tray and battery powered emergency lowering the Kronos also features a fully-hydraulic, automatic levelling system with outrigger setup monitoring and P-Matik parallel-stabilisation.

The Kronos also features telescoping upper and lower boom, trapezium-shaped aluminium profiles made of high strength steel and all functions are available from one control panel.

Other features include: electric-proportional controls with intuitive operator guidance; robust, lockable control panel with integrated operation

and display function; self-levelling platform with fully-hydraulic levelling system; corner-mounted, 180° turnable basket for extra flexibility; boom rotation via high-performance slew ring, worm gear and hydraulic motor and start-stop switch of combustion engine in the basket.

Accessories include safety harness; automatic boom function cut off by a monitoring system of the access stair locking system; coming home and memory function - a given point on the working diagram can be saved and returned the boom back at the push of a button; and a lifting device (300kg load capacity).

"Industry innovation does not happen regularly but when it does the result can be a spectacular fusion of technology that brings a complete game changer to the market," Aspac's Martin Eade said.



Aspac's Kronos, is a 'Nomadic Skytower' with a walking chassis and aerial sky lift

"And that's what the Kronos brings to strategically thinking businesses who are looking for an edge as well as the potential for industry leading ROIs in a market that is increasingly competitive.

"This fusion of Swiss and German technology and engineering is backed by one of the world's most comprehensive warranties and after sales support available across the country," he said.

Contact 03 9796 4254 or visit website: www.aspacgroup.com.au

Standards Australia and global representation

AS/NZS 1418.10:2011 Cranes Hoists and Winches – Part 10 Mobile Elevating Work Platforms Project Committee: ME-005 Cranes. The draft is now open for public comment.

EWPA members are advised they can view the draft and any incoming comments online at the Standards Australia website.

Members simply enter their Standards Hub login details. For EWPA members who do not have a login to SAI Global, you can view the document in the

member services area of the EWPA website and respond with any comments to: info@ewpa.com.au before the Public Comment Closing Date: 08/02/2017. The EWPA will pass these comments on to Standards Australia.

In other news, the EWPA now has global representation with the International

Standards Organisation.

The EWPA now has two representatives sitting on the ISO TC214 committee reviewing the standardisation of controls in EWPs. The next meeting is in Seattle in March then Sydney will be hosting a meeting in May 2017, two days prior to the HIRE17 Conference.

Guidance Note: Unfair Contracts under Australian Consumer Law

The EWPA has produced a Guidance Note to assist members in dealing with the 'Unfair contracts regime' under Australian Consumer Law (ACL), with some points to consider regarding small business contracts and what constitutes an 'unfair term.' This regime for small

business contracts came into effect on 12 November 2016. It can be found in the member area of the EWPA website under 'Contracts and Insurance'. Visit the EWPA website: www.ewpa.com.au for more information and a copy of the complete Guidance Note.

The EWPA advises members the Guidance Note has been produced to assist members and is not legal advice or a substitute for legal advice. Members are advised to seek their own legal advice on specific implications for their businesses.

BE READY FOR ANYTHING

INDOORS OR OUTDOORS



WATCH IT NOW AT
[GENIELIFT.COM.AU/Z60](https://www.genielift.com.au/Z60)

The new Genie® Z™-60/37 fuel electric hybrid (FE) boom lift is 4-wheel drive, and can climb 25% faster than typical diesel powered units. With up to 45% gradeability and all-terrain foam filled tyres standard, you will be ready for anything – indoors or outdoors.

Genie®
A TEREX BRAND

TAKING
YOU **HIGHER**™
[GENIELIFT.COM.AU](https://www.genielift.com.au) | 1800 788 633

Stramit launches innovative crane to roof solution

Stramit, Australian manufacturer of steel building products, has launched the Crane to Roof solution – a specially made roofing product delivery truck and mounted crane in one.

The HIAB XS 288 E8 HiDuo crane mounted on a Volvo FM 8x4 with a 13.5m trailer, custom built for Stramit, was developed for mid-tier roofing applications.

According to the company the solution is ideal for residential, multi res and light commercial building projects, as well as hard to access locations such as narrow sites.

“The compact and efficient design of the vehicle can get close to a building site, eliminating the need for a separate crane to be set-up on site,” John Bull, Stramit Group Marketing Manager said.

“With the product arriving at the same time as the crane there’s no need to coordinate delivery times, thus saving on handling the product and in turn reducing possible product damage.”

Stramit’s Crane to Roof unit is designed to reach a height of 23m, and will lift a maximum sheet length of 18m, and a maximum load of 2 tonnes. Featuring stabiliser legs at the rear and on the sides



The HIAB XS 288 E8 HiDuo crane is mounted on a Volvo FM 8x4 with a 13.5m trailer

of the unit, which are for stability only and not lifting, unlike conventional slew or AT cranes, this design aspect makes the unit suitable for nearly all worksites under five degrees slope. Additionally, set up times are significantly reduced with the stabiliser legs being fully engaged within five minutes. Once in position, the unit is ready to lift the Stramit roofing product within 15-20 minutes.

The Stramit Crane to Roof solution is also safe and reliable with fully trained crane operators using wireless technology to

best position product into the desired location, increasing safety and efficiency. A further advantage of the wireless technology is the option of a combined Driver and Dogman package allowing tasks to be completed faster and at a lower cost. Crane to Roof unit is available within a 100km radius of Stramit’s metro locations in Brisbane, Sydney and Melbourne.

Contact Brisbane: 07 3803 9999; Sydney: 02 9834 0900; Melbourne: 03 9237 6200 or visit www.stramit.com.au

New Italian design Dingli Boom Lift range

The new Italian design Dingli Boom Lift range was launched at Bauma China in November last year.

Ray Bengowski, Dingli’s Managing Director, Dingli’s Karen Vella and Darren Baxter from Access Sales & Spares, the Dingli distributor in Victoria were present for the launch.

There are eight models in the new range (four articulating and four telescopic) with platform heights of 14m, 18m, 22m and 26m.

Designed in Italy by telehandler specialist Magni the machines fully comply with the latest versions of EN280, ANSI and ISO standards.

Dingli is in the process of obtaining design registration for these products and expects to have them available to the Australian market by March 2017.

According to Ray, all eight models have a revolutionary 4x4 axle drive system,

improved traction and are more fuel efficient than other models.

“Including these eight new booms, Dingli had in excess of 50 machines on display at the Bauma show this year,” Ray said.

“The Rizer S036-RS which launched in Australia early 2016 was also a popular model on the show stand along with the Raptor MV095J and as always the E-Tech S06-E.”

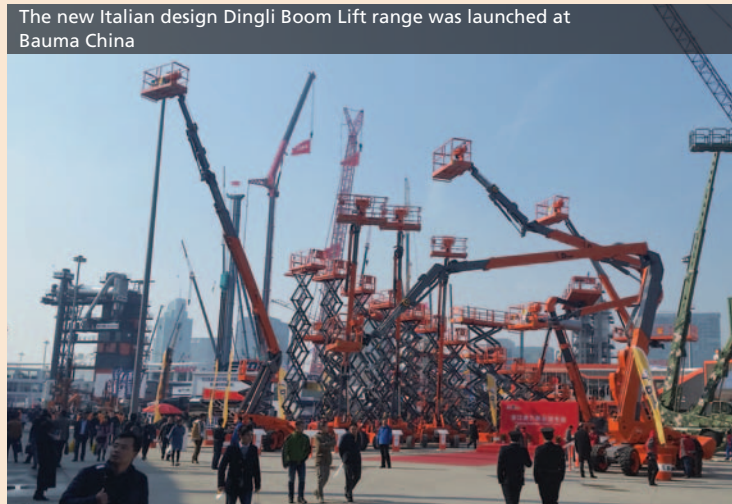
Zhejiang Dingli Machinery Co currently has three manufacturing facilities in Deqing, Zhejiang covering a total area of 200,000m² and will be commencing work on facility four in early 2017.

Also in November Dingli

Australia employed a new salesman for the Queensland region, Daniel Miller. Daniel comes to Dingli with seven years’ experience in capital equipment sales. Contact Daniel on 0428 833 388 or via email at qldsales@dingliaustralia.com.au

Contact: 1300 623 622 or visit website: www.dingliaustralia.com.au

The new Italian design Dingli Boom Lift range was launched at Bauma China



KEEPING YOU IN THE AIR



OUR NETWORK COMPRISES:

- Industry best workshop and field service capabilities
- Fast delivery of spare parts... for any make
- Unrivalled technical support
- Training
- Equipment repair, refurbishment and inspection services



COMPACT CRAWLER BOOMS



SCISSOR LIFTS



VERTICAL LIFTS



LIGHTING TOWERS



TELEHANDLERS



GROUND SUPPORT

Australia - 131 JLG New Zealand - 09 276 1728
www.jlg.com.au



Star tracked bi-levelling scissor lift offers new dimensions of safety and value

A bi-levelling compact tracked scissor lift that can safely traverse slopes and terrain where access equipment previously could not operate is being introduced to Australia by United Forklift and Access Solutions.

The Athena 850 bi-levelling tracked scissor lift levels on its axis in longitudinal and lateral directions to operate on slopes and undulating terrain where conventional scissor lifts cannot operate, United Forklift and Access Solutions' General Manager, Sales, Marketing and Distribution, Trent Osborne said.

"Conventional scissor lifts are typically limited to slight inclines of 2-4 degrees, whereas the Athena 850 scissor lift handles with assurance and safety, terrain variations up to 50cm front and back and 38cm side-to-side on uneven terrain, or inclines up to 20 degrees, Trent said.

"Marketed under the headline 'the only one of its kind in the universe,' the compact and versatile Athena 850's outstanding design and performance won both the international (IAPA) and HRIA Award, Best New Product of the Year – Access for 2016. With a minimum operating width of 1300mm, basket capacity of 250kg and a maximum working height of 7.9m, the machine has many uses.

"Tracked scissor lifts already existed before the Athena, but what makes this machine unique is its bi-levelling technology, which is found only on the Athena," Trent said.

"The Athena is built tough for indoor and outdoor work, where its design and functional superiority removes limitations inherent in conventional mobile scissor lifts. This greatly extends the machine's safety versatility and value in the workplace."

Safety, versatility and workplace efficiency features include:

- Compliance with AS1418.10-2011;
- Gradeability of 25 degrees, side slope 21 degrees, operating and driving safely on inclines of up to 20 degrees with two-axis automatic levelling constantly monitored to ensure safety;
- Elimination of concerns about machines not being operable on-site because of the slightest inclines or the machine being too big or heavy for the site conditions. Athena 850 weighs 1700/2190kg, depending on specification and operates on steep driveways, disabled access ramps, footpaths and small access corridors;
- Elimination of many safety hazards inherent in the common practice of "packing the wheels" of scissor lifts on job sites. This can create potentially lethal situations where the accidental flicking of a switch to 'Drive forward' instead of 'Descend' can turn into a potentially fatal mistake;
- Ground clearance of up to 350mm makes easy work of rough terrain, urban obstacles and loading and unloading without special trailers tracks that operate independently so operators can get in close;
- Automatic accelerator, bi-levelling undercarriage, electrohydraulic proportional commands, direction control, easy drive system, automatic control of inclination;
- Compact Hatz 1B40 diesel engine with 220V 2KW auxiliary electric pump and 220V 1KW power generator which makes it possible to operate the scissor lift indoors and in areas where the use of combustion engines is not allowed;
- Kit for high speed (maximum 2.2kph);
- Onboard power source in the basket



United Forklift and Access Solutions is introducing the Athena 850 to its line up

for hand tools and lateral levelling for moving at heights plus/minus 4 degrees.

"The Athena is simple to control and extremely adaptable to difficult and undulating terrain and worksites, indoors and out. Its structure has been designed to resist overload, with high-resistance steel lifting mechanisms," Trent said.

The Athena 850 scissor lift complements United's broader national ranges of forklift and access equipment, including CAT forklifts, Elevah personal stock pickers and Konecranes lift trucks in capacities up to 65tonnes.

Contact: 131 607 or visit website: www.unitedequipment.com.au

EWPA and the Australian Constructors Association collaborate

The EWPA has been working with the Australian Constructors Association (ACA) on the safety of EWPs in the construction industry. Machine selection, operator training and product familiarisation have been identified as

critical to safe operation of the EWPs. The EWPA will launch its EWP Supervisor course which will be a great tool for the construction industry, where multiple EWPs can be operating on site at any one time. The ACA is able to provide direct

feedback from Tier One Construction companies on issues relating to EWPs and according to the EWPA, this consultation process is very useful in the production of training material and guidance notes.



A LOW **1.99%** P.A. 48 MTHS
**AND PICK YOUR
 BONUS**



Between January 1st and June 30, 2017 you can now take advantage of a low 1.99% P.A. finance on selected Snorkel Elevating Work Platforms with your choice of bonus.*



OR



OR



**Extended Parts & Labour
 Warranty for 5 Years***

**12 months of
 machine servicing***

**Extended trade terms
 of 90 days***

**TO FIND OUT MORE ABOUT THIS OFFER
 visit www.ahernaustralia.com.au
 or call 1300 900 700**



*Terms and conditions, fees and charges apply. See website for full terms and conditions. Promotion is offered by Ahern Australia and is valid on selected models only between January 1 and June 30, 2017. Ahern Australia reserves the right to amend or withdraw this offer at any time, without notice. Specifications, photos and diagrams are provided for illustrative purposes only and are subject to change. For full details on this promotion, visit our website or contact Ahern Australia on 1300 900 700. Ahern Australia's decision is final. Finance offer facilitated by Moody Kiddell & Partners (Australian Credit Licence 388771) to approved business customers only (GST registered). Finance is based on a Chattel Mortgage Agreement with a maximum term of 48 months and Nil balloon. The "Pick your Bonus" offer allows for ONE (1) of the additional bonuses to be chosen by the customer upon purchasing a selected unit with the promotional finance offer. The "extended trade terms of 90 days" consists of first finance payment being drawn 90 days from signed and executed documents.

Access Sales & Spares partners with Merlo

Melbourne based Access Sales & Spares has taken on the Merlo Melbourne Dealership (Telehandlers) offering the full range of Merlo telehandler products from the compact series, starting with the P25.6 through to high capacity series P72.10.

Located in Sunshine, in Melbourne's inner west, Access Sales and Spares covers a 250km radius and greater still if it is closer than other dealers. The new dealership will also see the company offer a vast range of Merlo Genuine attachments and parts, as well as onsite and workshop service and repairs.

Merlo approached Access Sales & Spares in 2016 to take on the dealership.

Darren Baxter, Managing Director of Access Sales & Spares said the company's reputation preceded the move to Merlo.

"We have an ever growing cliental base of telehandler customers and are very much focused on backing and supporting products we sell," Darren said.

In 2016 Merlo Group Australia launched its 'new generation' of Telehandlers.

"From the ground up.... new cab and

chassis designs are packed with new features and options, as show cased at the Hire and Rental show last May," Darren said.

"Many new factors can be seen with the 'new generation', such as European tier 4 class low emission engines, better safety features, more comfort, greater efficiency and outstanding performance.

"Access Sales & Spares is also able to offer great interest rates and terms with the backing of Merlo Finance, so the return on investment is simply a no brainer," Darren said.

"Predominately our business is within the access industry suppling new and



Access Sales & Service has taken on the Merlo Melbourne Dealership (Telehandlers)

used access equipment, our new product range of consists of Dingli, Skyjack and Niftylift. Merlo products now complement the rest of our line up giving us a diverse and complete range of equipment for all areas of industry.

Contact: 03 9312 3835 or visit website: www.accesssalesandspares.com

Snorkel adds to its manangement team in US and UK

Snorkel has added three new appointments to its management team.

Jamie Graham has been appointed Vice President of Product Support, based at Snorkel's global headquarters in Henderson, Nevada. Reporting to Snorkel CEO, Matthew Elvin, this is a new role to provide direction at an executive level to product support and spare parts functions globally. Jamie also has responsibility for the same functions for Xtreme Manufacturing, the majority stakeholder in Snorkel.

The Vice President of Product Support will be responsible for delivering after-sales support for Xtreme and Snorkel equipment, across all functions including spare parts, service, technical support, technical documentation, service bulletins, warranty policy and technical training.

Jamie previously held the position of Director of Product Support, USA, and Director of Operations for Snorkel, and was based in the Snorkel manufacturing facility in Elwood, Kansas.

Jamie will be supported by Tony

Deatherage, who has been appointed Service Manager, The Americas for Snorkel and Xtreme. In his new role, Tony will have the increased responsibility for Xtreme Manufacturing telehandlers, plus Snorkel, as well as an expanded territory which includes North and South America.

Tony is tasked with the management and coordination of the day to day after sales support requirements across the region, which includes the management of regional field support teams, service training, warranty, and distribution of technical documentation.

Tony has over 23 years of experience within technical service and training at Snorkel. Starting in 1993 as an assembly technician, he went on to hold multiple positions at the company, including regional service representative roles and product support facilitator. In 2010, Tony was promoted to service manager at Snorkel's manufacturing facility in Elwood.

In the UK, Snorkel has appointed John Gill

as Director of Manufacturing Operations. John has responsibility for leading Snorkel's Vigo Centre production facility in Washington, Tyne & Wear in the UK.

John will provide direction and strategy to Snorkel's UK manufacturing facility, to ensure production goals are met or exceeded, while delivering on all key metrics, including health and safety, product quality, and production and supply chain efficiency.

John joins Snorkel from Terex Corporation, where he held the position of General Manager and Operations Director for Coalville and Malaysia. John started his career with British Steel before joining Komatsu UK in 1987 in production engineering. During his 14 year tenure with Komatsu, John held positions before being promoted to Manufacturing Director in 1997. In 2001, John joined JCB as Managing Director for JCB Heavy Products, transferred to JCB Loadall, where he spent a further five years as Managing Director of the telehandler division. Visit: www.snorkellifts.com



Athena 850 and Athena HE
Safer, Smarter, Stronger.



Brought to you by ASPAC Group.
www.aspacgroup.com.au | 03 9796 4254

ASPAC 
GROUP

Boom lift delivers performance and energy efficiency

Businesses using the fuel-electric Genie Z-60/37 FE articulating boom lift since its global launch in April 2016 have been able to cut costs and their carbon footprint, while getting increased performance and versatility from their aerial work platforms according to Brad Lawrence, Genie General Manager, Terex AWP.

“Suitable for indoor and outdoor use, the Genie Z-60/37 FE is driven by high-efficiency AC motors and combines advanced diesel power and four-wheel-drive performance with the energy efficiency and quieter operation of compact, low-weight electric-powered booms. It can travel 25% faster than other typical diesel-powered units,” Brad said.

“The Genie Z-60/37 FE boom lift is a revolutionary approach to our mid-size Z-boom family and it adapts to our customers’ increasing needs for high performance, high efficiency and low emissions.

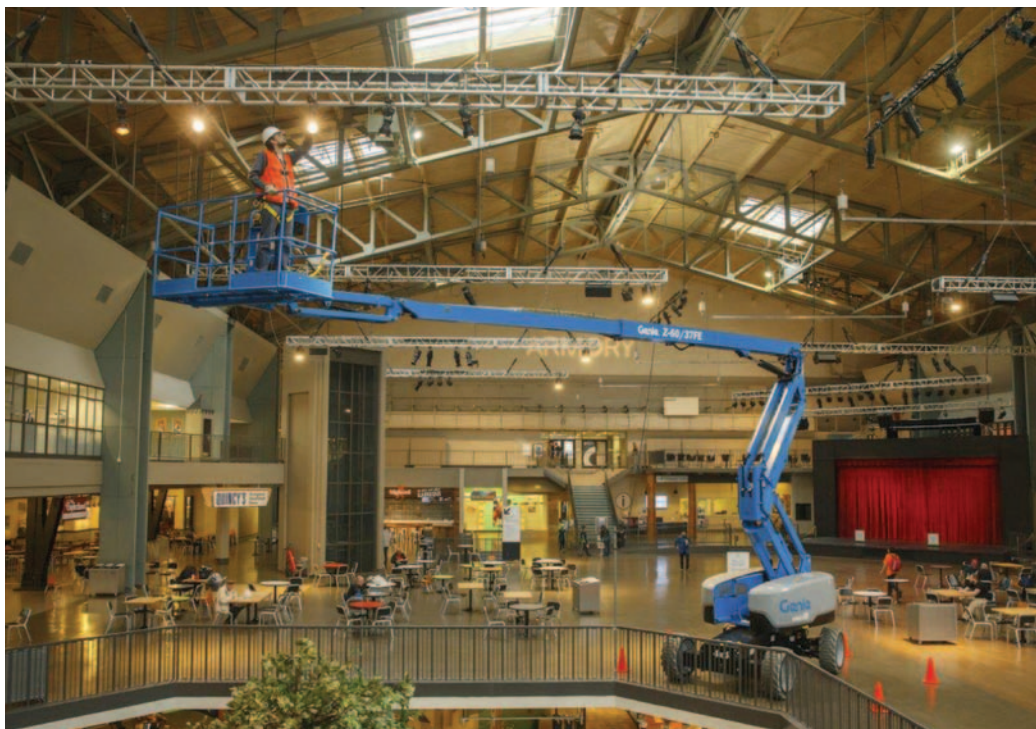
“When operating in full-electric mode, the Genie Z-60/37 FE boom lift offers a full day of emission-free performance on a single charge, and in hybrid mode it runs for more than a week on a single tank of diesel.

“In hybrid mode, an environmentally friendly 24-hp diesel powered generator constantly monitors the charge of the 48V DC battery pack, keeping it topped up and then automatically shutting off to minimise fuel consumption. In extreme battery usage conditions or after heavy full-electric operation, the hybrid power system can provide a bulk charge in around four hours,” he said.

“When an operator is climbing hills or taking on rugged terrain, the hybrid system can provide power directly to the AC motors, combining the power of the diesel-driven generator and the 48V DC battery pack.

“On long-term jobs, even when on-site power is not available, this machine is versatile enough to handle tasks ranging from work on rough and unprepared ground to indoor applications where it’s important to keep noise and emissions to a minimum,” Brad said.

The Z-60/37 FE boom lift shares the robust quality and rough terrain performance that make the Genie Z-62/40 and S-60 boom lifts popular he said.



In electric mode, the Genie Z-60/37 FE boom lift offers a full day of emission-free performance on a single charge

“Our Z-60/37 FE boom also offers the advantage of being sufficiently lightweight and compact to handle tasks in confined spaces,” Brad said.

The Z-60/37 FE boom lift is equipped with foam-filled, non-marking all-terrain tyres, and offers 45% gradeability and ground clearance of 33cm (1ft 1in) as well as being able to travel 25% faster than other typical diesel-powered units, the company claims.

“Operators will also appreciate full-time active oscillating axles that increase wheel contact on irregular terrain and its fully sealed AC motors which operate even while submerged under 91cm (3ft) of water.

“The Genie FastMast system enables the boom to be moved from full height to below grade and back, shortening ground-to-top lifting time with the use of just one boom control. Like all Genie booms, it enables operators to vertically track walls by simply raising or lowering

the secondary boom without needing to re-position the machine.

“The fuel electric Genie Z-60/37 FE articulating boom will be on display in May at HIRE17 and will be available in Australia in Quarter 2 2017,” Brad said.

The Genie Z-60/37 FE boom lift provides 20.16m of working height, 11.4m of horizontal outreach and 7.4m of up-and-over clearance. It is equipped with a 1.5m jib offering 70° up and 65° down range of motion and a 160° platform rotation. It boasts a narrow footprint and a low 58cm tail swing. The platform comes in widths of 1.8m and 2.4m. The capacity is 227kg and it can take on board two people across the entire working envelope. A side-entry swing gate and front sliding mid rail are standard. The 2.4m platform comes with an additional side sliding mid rail, opposite the gate. With a weight of 7,530kg and a stowed length of 8m, it is easily transported on a standard truck.

Visit: www.terex.com

Haulotte

More than lifting



HA20 RTJ PRO

A COMPACT WITH BIG ATTRIBUTES

Simple, robust, reliable and high performance

ADVICE

EXPERT TEAM
LOCAL SUPPORT WORLDWIDE

FINANCE

LEASING SOLUTIONS
FINANCE SOLUTIONS

SERVICES*

SPECIALIST TECHNICAL ASSISTANCE
MAINTENANCE & WARRANTY
PROFESSIONAL TRAINING
GENUINE SPARE PARTS

HAULOTTE GROUP 46 Greens Road, Dandenong Vic 3175 Australia
Tel: +61 (0)3 9792 1000 Fax: +61 (0)3 9792 1011 – sales@haulotte.com.au

 www.haulotte.com.au

* Please contact us to discuss which services are applicable and suit your needs.

New premises, new website, new business focus

All Lift Forklifts & Access Equipment has opened a new branch in Melbourne (8 Windale Street, Dandenong) to provide a higher level of service for its growing customer base in the greater Melbourne area.

According to All Lift Forklifts & Access Equipment's Managing Director, Dean Kretschmer the company's customer base has grown so significantly over the past three years the new premises were necessary to provide dedicated space to store and prepare machines for new and existing customer hires.

"The new warehouse also allows a central place for our technicians and hire specialists to gather each morning to assess how the business / hire equipment is travelling," Dean said.

All Lift Forklifts began operating May 1998 specialising in the hire of 1.5 tonne to 2.5 tonne LPG and electric powered forklifts. The business now has over 800 machines in its hire fleet including forklifts, all terrain forklifts, telehandlers and elevated work platforms (man lifts, scissor lifts and knuckle booms – diesel and electric).

"The access side of the business is relatively new however it has allowed All Lift Forklifts to expand within the hire sector at an exceptional rate and even resulted in a business name change in the past 12 months – All Lift Forklifts & Access Equipment.

"All Lift Forklifts has carved out a specific sector of the market, specialising in rough terrain units such as all-terrain forklifts and telescopic handlers (with currently more than 150 of these units in the fleet). But our bread and butter still remains in warehouse forklifts and material handling," Dean said.

"All servicing and maintenance is handled by six on road technicians, available in Sydney 24/7 and in the fully equipped workshop in Rydalmere while freight is handled by the All Lift 10 tonne and 13 tonne tilt tray services.

"Opening the Melbourne branch will increase customer service and satisfaction. We are a boutique hire company and we pride ourselves on answering the phone first time, every time and providing an efficient turn around, no matter what the issue.

"We are a focused and motivated plant machinery hire business specialising

in the hire and sale of rough terrain units such as all-terrain forklifts and telehandlers. Being fully independent with a young driven team of hire specialists and having a fleet where the majority of equipment is less than five years old, we can confidently supply the latest model units with the most competitive pricing in the industry, when and where the customer requires.

"All legal and safety requirements are closely monitored and maintained to ensure an easy handover of hire equipment every time. Our machine servicing and maintenance is of the highest standard and thoroughly upheld in line with industry standards.

"We launched a new and improved Sydney / Melbourne website recently which we hope will generate more buzz around the new Victorian premises.

"Matthew Nemes is the new Victorian State Manager and will be leading the Victorian team into a big 2017. We plan to purchase new rental machines for



All Lift Forklifts & Access Equipment has opened a new branch in Melbourne

Victoria and NSW to keep our fleet up to date and in supply for our customers."

Contact: 1300 729 700 or visit: allliftforklifts.com.au

Aerial platforms with batteries feed ecological needs

Whether truck or track mounted, battery-powered aerial platforms are ideal for work in indoor spaces, or where pollution from engines or noise is not allowed.

Truck-mounted platform with battery, the CTE B-LIFT 17E from CTE Aerial Platforms, is versatile with 16.6m of working height, 11.3m of outreach, and 250kg capacity. The more than 500Ah battery guarantees 1.5 hours of continuous work which when exhausted, recharges with PTO or electric power.

Compact, self-propelled track mounted platform with battery, or 'spiderlifts', CTE TRACCESS 170E and CTE TRACCESS 230E deliver 48v electrical motors, lithium batteries 100Ah or 300Ah that offer respectively an autonomy up to 2.5 or five working hours, as well as compact dimensions to pass through standard doors. CTE TRACCESS 170E reaches 17m of working height, 7.5m of outreach

and 200kg of capacity; CTE TRACCESS 230E reaches 23m of working height, 12m of outreach 200kg of capacity.

The CTE B-LIFT 17E has been awarded by SAIE INNOVATION – TOWARD ZERO IMPACT at the SAIE Exhibition 2016.

Visit: www.ctelift.com

The CTE B-LIFT 17E from CTE Aerial Platforms has 16.6m working height



MORE THAN JUST REACH.

SJ30 ELECTRIC ARTICULATING BOOMS



From the outset Skyjack identified two key parameters for these electric booms. Along with offering competitive reach specifications, they also feature exceptional drive and duty cycle performance...

- Increased duty cycles maximize the amount of work possible from a fully charged machine.
- Outstanding drive performance means loading trailers for transport is significantly improved.
- Direct electric AC drive system feeds two wheel motors operating in parallel to maximize gradeability.
- Speed sensing traction control reduces loss of traction and tire scrubbing.
- Machine weight of 5,677 kg.
- Variable speed system pump, and the utilization of gravity for riser and boom lowering, further aid efficiency.

www.skyjack.com

SKYJACK[™]
simply reliable

SKYCODED. SKYRISER. EASYDRIVE. ACCESSORYZERS.

Workplace ladders upgraded to safer, swifter performance

A global range of ladder systems and access equipment purpose-built to provide solutions to major workplace safety and efficiency issues is being introduced to Australia by United Forklift and Access Solutions.

United has been appointed exclusive national distributor for the Elevah range which is focused on enhancing workplace efficiency while preventing accidents and falls from lower heights.

The Italian-designed-and-built range includes the Elevah 40 Move, a self-propelled aluminium personal access lift with a class-leading 4m working height that has won the International Powered Access Federation (IPAF) Product of the Year award for low-level access.

The first vertical mast (access) and order picker (forklift) products to be distributed in Australia include the Elevah 40 Move Stock Picker, as well as the Elevah 51 Move Stock Picker with up to 5.1m working height and the Elevah 65 Move Stock Picker with a working height of up to 6.5m.

All Elevah products to be distributed in Australia respond to the latest European and global safety regulations applying to traditional ladder systems, United Forklift and Access Solutions' General Manager, Sales, Marketing and Distribution, Trent Osborne said.

"While these have resulted in more cumbersome and heavier conventional systems, the light and safe Elevah systems have provided a totally new and more efficient solution to an old problem. The Elevah range offers the greatest lift heights in its class at a competitive and affordable rate," he said.

Elevah products, manufactured by Faraone Industrie, feature safe working platforms with built-in protection cages for operators and nimble performance for safe operation even in crowded or restricted spaces. The compact and versatile access machines each feature tight turning performance with a high turning radius that enables the machinery to turn virtually within its own footprint, Trent said.

Major advantages include it being safer than conventional ladder systems, helping to reduce preventable falls in the workplace from relatively low heights.

In NSW alone, between July 2011 and 31 May 2016, 3,168 workers were injured

in falls from ladders, including two fatalities at a total cost of \$54.5 million to the NSW workers' compensation system.*

Nationally, in the eight years from 1 July 2003 to 30 June 2011, 37 workers died following a fall from a ladder.**

Safety features including side entrance with sensors which stop the cage opening; dual operator presence device; anti-tilting device; electronic slope monitoring; overload monitoring.

The Elevah range complements United's broader national ranges of forklift and access equipment, including CAT forklifts and Konecranes lift trucks in capacities up to 65 tonnes, as well as the full range of Haulotte access equipment.

* SafeWork NSW – SafeWork NSW issues ladder safety warning, www.safework.nsw.gov.au/news/media-release/safework-nsw-issues-ladder-safety-warning

** SafeWork Australia – work-related injuries and fatalities involving a fall from height, Australia, www.safeworkaustralia.gov.au/sites/SWA/about/Publications/Documents/812/Falls-from-Height.pdf



The Elevah 40 Move has won a global award for low level access

Contact: 131 607 or visit the website: www.unitedequipment.com.au

Konecranes launches new technician training centre

Crane service organisation, Konecranes, is launching a new state-of-the-art technician training centre in Sydney to provide its technicians with industry-specific training on crane use, service, maintenance and inspections.

The new technician training centre, which has a strong focus on efficiency, safety and operations and standards compliance, complements the existing centre in Perth and covers technical, electrical, product-specific, maintenance, inverter and inspector training.

"A major advantage of our training centres is not only does it refresh the knowledge the technicians have acquired at TAFE or college, but it provides them with training specific to industrial applications, and comprehensively prepares them for real-world tasks they'll be performing,"

Martin Davies, National Technical Training Manager, Konecranes said.

"The training programs involve a mixture of theoretical and practical components, and give our technicians all the required skills to be OEM and Standards compliant," Martin said.

The training centres feature advanced simulators, delivered straight from Konecranes head office in Finland, so trainees can practice using cranes and associated equipment in a safe environment that mirrors real-world conditions.

"We don't just cover Konecranes equipment either – we provide training for cranes and equipment from other manufacturers too."

Contact: 02 8796 7666 or visit website: www.konecranes.com.au



HIGH QUALITY

LARGE RANGE GREAT SERVICE

Thanks to a database of 900,000 known cross references and 70,000 stocked references, you'll find quality parts for your aerial work platforms such as joysticks, printed circuit boards, switches, chargers and non-marking wheels to name a few.

Contact our experienced sales team, who are ready to assist with your inquiry.

☎ 1300 505 005

✉ accessparts.au@tvh.com



PARTS & ACCESSORIES



TVH AUSTRALASIA PTY LTD · HEAD OFFICE BRISBANE
 ABN 67 117 701 587 · 735 Boundary Road · Richlands QLD 4077 · Australia
 T +61 7 3277 0877 · F +61 7 3277 0026 · brisbanesales@tvh.com · www.tvh.com

ADELAIDE
 96 South Terrace
 Wingfield SA 5013
 T +61 8 8359 1155
 F +61 8 8359 0600
adelaidesales@tvh.com

MELBOURNE
 7/66-74 Micro Circuit
 Dandenong South VIC 3175
 T +61 3 9544 6622
 F +61 3 9544 2617
melbournesales@tvh.com

PERTH
 2/15 Colin Jamieson Drive
 Welshpool WA 6106
 T +61 8 9358 2200
 F +61 8 9358 2822
perthsales@tvh.com

SYDNEY
 1/1002-1010 Canley Vale Road
 Wetherill Park NSW 2164
 T +61 2 9756 6677
 F +61 2 9756 3555
sydneysales@tvh.com

TVHPARTS

A new use for used hire equipment

As we start the new year, Stuart King of Swan Hill Hire in Victoria reminds us not everyone in the world has it as good as we do here in 'the Lucky Country'.

Stuart is a Director on the Board of 'Changing Nations' and a founding member – a philanthropic trust with a mission to change nations by engaging with less fortunate third world communities to train and skill people so their lives may be transformed.

And he is calling on the hire industry in Australia for help.

"I would like to engage the hire community to contribute older and/or under utilised plant, tools and equipment which we could collect and freight to Uganda," Stuart said.

"Equipment we ship, (we have the ability to get containerised freight there) can be used in building, construction and farming projects and in the trade training centre we plan to establish."

Currently the Changing Nations focus is on Uganda, a country war torn and ravaged by unrest. It has been a very volatile area in the recent war years – the region was terrorised by the LRA led by Joseph Kone, with many massacres/mass graves, forced child soldiers and child brides, Stuart said.

"We have moved away from the traditional 'aid' model to a training model which will enable communities to be self-sufficient rather than reliant on external support.

"Currently our main focus is the community of Pader in Northern Uganda – a community devastated by war and

conflict since the 1970's. One of our main aims in the next three to five years is to establish a secondary school and trade training facility where we can train the next generation in skills such as farming, building and construction and mechanical skills.

"Changing Nations would not just be educating students but also be educating the community as a whole in order to prosper and advance them by giving them greater understanding of how to do farming, building, mechanics, etc.

"I have experienced firsthand the construction equipment, or lack thereof, in Uganda. The classic example is the use of bamboo/stick scaffolding to construct multi storey buildings – it is actually pretty incredible what good old fashioned hard manual labour (and no safety parameters!) can achieve. I've witnessed wheelbarrows of brickies mud being wheeled up ramps inside stick scaffolding to the third storey of a building. It is not primitive – they have cars, trucks, machines, etc – however in the more remote areas where we are focusing there is less of this, and often where they are available there are not competent operators or people to maintain/fix machinery."

This is where the hire industry could come into play.

"In the short term budding philanthropists could contribute financially to assist in the acquisition of




Changing Nations is calling for used hire equipment to help Ugandans in need

land and construction of the secondary school and training centre," Stuart said.

"In the longer term, my vision is the hire industry can assist by donating surplus and/or disused equipment for shipping to Uganda for use in training and commercial projects. There may also be opportunity for those experienced in training to provide training in Uganda.

"For me, Changing Nations is an opportunity to give back to those in need, and provide specialist skills and support to develop a region that has massive needs. Success in business is not all about me or just us, but about being able to use our resources to help and develop others in need."

Contact: 03 5032 2107 or email Stuart on: stuart@swanhillhire.com.au




LIFTSMART


ELEVATING INNOVATION

The Next Generation of Material Lifts


Designed specifically for the Rental, Construction and Industrial Markets - providing improved specifications, features, durability and performance.



Smart-Set™ "pin-less" adjustment system.




Clear-Path™ foot clearance.



Precision cast metal cable pulleys.

Made in the USA

- Best in Class Load Capacity
- Dual Handle - 2 Speed Winch
- High Quality Heavy Duty Design
- Superior Features



1300 272 111

www.accessservice.com.au
Brisbane • Sydney • Melbourne • Perth

Toyota's Bravi EWP's move into La Trobe Valley

Toyota Material Handling Australia's (TMHA) Gippsland service agent has introduced a new TMHA product line in its rental fleet, commissioning the first Bravi LUI 460 elevated work platform (EWP) sold by TMHA in Victoria.

With a fleet of 60 Toyota rental forklifts and four mobile service vans, Latrobe Valley Forklifts services all the power stations in the valley and a large territory from Drouin in the east to the NSW border and from the ranges to the coast.

Rob and Kelly Mustoe founded the family owned business in 2002 and it has been a TMHA agent since 2005.

Rob Mustoe praised the manoeuvrability of the new Bravi Lui 460 EWP, saying it is far better than anything he has previously encountered.

"We see the Bravi EWP's being very popular with local contractors," he said.

"I have already had interest from a lead-light window maker who needs a work platform to access church windows." TMHA is distributing four models of Bravi EWP's. It expects the three most popular will be the Sprint, with a 90kg

material load capacity and maximum platform height of 3,350mm; the Leonardo HD, with 180kg platform capacity and platform height of 2,900mm; and the Lui 460, featuring a 280kg platform capacity and platform height of 4,620mm."

The Bravi Sprint is expected to be the volume seller and is aimed at large retailers who need a fast and agile EWP solution in warehouses and shop floors.

At TMHA's request Bravi made a number of changes to the standard specification. These include a safety feature that cuts the hydraulic lifting system if the interlocking gate is not closed correctly, an operator platform service lock and a recess added to the cover to enable it to be used for storage. Other features of the Bravi Sprint include a high capacity, maintenance-free battery that can provide up to 30km travel with a single charge and six monthly service intervals.



Latrobe Valley Forklifts proprietors Kelly and Rob Mustoe with the new Bravi LUI 460 EWP

Contact: 1800 425 438 or visit website: www.toyotamaterialhandling.com.au

KERRICK®

CLEANING & LIFTING EQUIPMENT FOR THE HIRE INDUSTRY

Industrial Grade Pressure Washers
Reliable Spare Parts Availability
& Expert Servicing.



Heavy Duty, High Impact
Vacuums That Are Operator
Friendly & Easy to Maintain.



Material Lifts & Gantries Made in
The USA, Provide Quality
You Can Rely On.



WWW.KERRICK.COM.AU



ALERT – Tyres on Telehandlers

Issued by the TSHA December 2016

Did you know research undertaken by a major telehandler manufacturer indicates a 5% reduction in tyre pressure from the manufacturer's specified values can result in a 30% reduction in capacity at certain points on the load/height/radius curve?

This could result in the vehicle overturning. Tyres deflect/distort under load and they have a significant effect on telehandler stability and load carrying ability.

An example of the importance of properly planning tyre replacement occurred when a telehandler operator checked the tyre pressures on his machine. Having completed the checks, he was walking away when one of the tyres exploded!

A subsequent investigation revealed the tyre, which had recently been replaced, was a 14 ply with a 3.5 tonne load rating, rather than the manufacturer's specification of 16 ply with a six tonne rating. The contractor also found the tyre had been ordered from the company's approved supplier by asking for a tyre for the model of the telehandler, without mention of ply or load rating. A subsequent check of other machines on site found a third of them were fitted with incorrect tyres.

The effect of tyres on stability

Tyres play a vital part in the stability of telehandlers. Stability can be adversely affected by issues such as:

- mixing tyres from different manufacturers;
- incorrect ply rating;
- differences in diameter of tyres on the same axle due to differential wear;
- low tyre pressure;
- high tyre pressure;
- uneven tyre pressure;
- substandard repairs;
- tyre repair, replacement and maintenance for pneumatic tyres only. Foam filled tyres are not user serviceable.

Tyre pressure check

- Tyre pressures should be marked on the chassis adjacent to each wheel.
- Pressures should be checked daily



For pneumatic tyres, when any cut, rip or tear is discovered that exposes sidewall or tread area cords in the tyre, measures must be taken to remove the tyre from service immediately

when cold.

- If necessary inflate tyres to correct pressure as stated in the manufacturer's operators manual.

**Personnel inflating
tyres should stand
a minimum of 3m
away from the tyre
and outside the likely
explosion trajectory to
avoid injury in the event
of a failure.**

- Personnel inflating tyres should stand a minimum of 3m away from the tyre and outside the likely explosion trajectory to avoid injury in the event of a failure. This will require 3m of airline between the nozzle and the airline trigger mechanism.
- Personnel should ensure they stand to one side of the tyre facing the tread when inflating.
- Tyre valves should be checked to ensure they are not leaking. Valve stem caps should always be replaced.

Tyre damage

All tyres should be inspected daily as follows:

- the tread and side walls should be checked for bulges and separation;

- The tread and side wall should be checked for cuts.

For pneumatic tyres, when any cut, rip or tear is discovered that exposes sidewall or tread area cords in the tyre, measures must be taken to remove the tyre from service immediately. Arrangements must be made for replacement of the tyre or tyre assembly.

Tyre and wheel replacement

Replacement tyres should be the same size, ply and brand as originally installed; refer to the appropriate parts manual for ordering information. If not using an approved replacement tyre, the tyres must have the following characteristics:

- equal or greater ply and load rating than size of original;
- tyre tread contact width equal or greater than original;
- wheel diameter, width and offset dimensions equal to the original;
- approved for the application by the tyre manufacturer (including inflation pressure and maximum tyre load).

Unless specifically approved by the telehandler manufacturer, a foam filled or ballast filled tyre assembly must not be replaced with a pneumatic tyre. So when replacing tyres ensure the ply and pressure ratings are as per manufacturer recommendations.

Visit: www.tsha.com.au or contact the national office on 02 9998 2222.