



HIRE16

Connecting People

www.hireconvention.com.au

**GOLD COAST CONVENTION &
EXHIBITION CENTRE
5-6 MAY 2016**



INSIDE YOUR HIRE16 CONVENTION GUIDE

- Plan your show - Exhibitor information inside
- Indoor & Outdoor Floor Plans
- Full Convention Program – speakers, seminars, networking events
- Hire Industry Excellence Awards
- Best New Product nominations showcase

*Australia's only hire
industry expo!*



2016

Convention Guide



HIRE16

Connecting People

GOLD COAST 5-6 MAY 2016



Welcome...

The HRIA looks forward to welcoming you back to the sunny Gold Coast for the Hire and Rental Industry Association's annual Convention, HIRE16 Connecting People, 5-6 May, 2016 at the Gold Coast Convention & Exhibition Centre (GCCEC).



HIRE16 will provide direct connection to people, businesses and services as well as the latest equipment and technology for the hire industry over the two-day event.

HIRE16 Connecting People offers a crucial meeting point for the entire hire industry and associated markets in Australia.

With two days of industry focused keynote speakers and seminars and a host of international guests and visitors in attendance, there is much to be learned at the only hire expo in Australia.

Many international supplier members will also be attending, joining the host of industry leading suppliers exhibiting their equipment and services.

The HRIA Convention is the only place to see the latest in Access Equipment, Generators, Mini Equipment, Tools, Portable Buildings, Event Structures, Flooring, Lighting, Furniture, Rental and GPS Software, Training, Security and Insurance Services and much more all in one place.

HIRE16 Connecting People will deliver two days of uninterrupted face-to-face sales and exhibition time across indoor exhibition halls as well as an outdoor hands-on demonstration area.

HIRE16 provides a concentrated forum for networking for every visitor, with opportunity to hear and discuss latest industry innovations and ideas – at the coalface.

Topping off the event is the Hire Industry Excellence Awards which will bring attention to the outstanding and high achieving members of the industry.

Don't miss our exhibitor's listing in the Guide to help you prepare for the only 'rental show' in Australia.

Jeff Bernard
HRIA National President

Program

Wednesday, 4 May 2016			
6.30pm – 9.30pm	Welcome Cocktails	Networking & Happy Hour	Sofitel Hotel Pool Deck
9.00pm – late	Room 81 Bar	Networking	Sofitel Hotel Ground Floor
Thursday, 5 May 2016			
8.00am – 10.30am	Keynote Speakers (Tea & Coffee)	Michael Pascoe	GCCEC Room 5
		Jerry Grayson	
		Steve Sammartino	
10.30am – 5.30pm	Exhibition Open	Indoor	GCCEC Halls 3 & 4
		Outdoor	GCCEC Northern Lawn
4.30pm – 6.00pm	Happy Hour	Networking	GCCEC Halls 3 & 4
7.00pm – 11.00pm	HRIA Event Night	Networking	East Restaurant Broadbeach
9.00pm – late	Room 81 Bar	Networking	Sofitel Hotel Ground Floor
Friday, 6 May 2016			
8.30am – 10.00am	Seminars (Tea & Coffee)	Hire & Events	GCCEC Room 5
		EWPA & TSHA	GCCEC Room 6
10.00am – 3.00pm	Exhibition Open	Indoor	GCCEC Halls 3 & 4
		Outdoor	GCCEC Northern Lawn
7.00pm – 11.30pm	Hire Industry Excellence Awards Presentation and Dinner		Marriott Hotel Ballroom Surfers Paradise
11.30pm – late	Room 81 Bar	Networking	Sofitel Hotel

Registration Opening Times		
Wednesday, 4 May 2016	12.00pm – 3.00pm	GCCEC, Foyer Hall 3
Wednesday, 4 May 2016	6.00pm – 8.00pm	Sofitel Hotel, Pool Deck
Thursday, 5 May 2016	7.45am – 5.00pm	GCCEC, Foyer Hall 3
Friday, 6 May 2016	8.00am – 12.00pm	GCCEC, Foyer Hall 3

50
YEARS
BUILDING THE
FUTURE 

GENIE® SX™-150 TELESCOPIC BOOM

The SX-150 offers uncompromising productivity and industry-leading capacity through the full working envelope. This Super Boom is a fit for the most extreme construction, maintenance, telecommunications, gas and oil refineries, chemical maintenance, and large utility applications.

Genie®
A TEREX BRAND

TAKING YOU **HIGHER**™
GENIELIFT.COM.AU | 1800 788 633



Keynote Speakers Thursday, 5 May

Michael Pascoe

Michael will discuss the challenges facing our industry. What everyone whether supplier, small business owner or large corporation needs to know about the financial outlook for the industry and the country. As one of Australia's most respected and experienced finance and economics commentators, Michael brings rare humour and plain language to the science of economics.



Jerry Grayson

Hear how Jerry saved a wounded fighter pilot, rescued desperate sailors from sinking ships during the infamous Fastnet Yacht Race and picked up a grievously ill crewman from the deck of a nuclear-armed submarine that was playing a cat-and-mouse game with the Soviet navy. In 2500 hours of flying with the Royal Navy, Jerry and his crewmates saved more than 70 lives on 120 rescue missions. His story is a salute to all the men and women he worked with who were able to turn tragedies into triumphs.



Steve Sammartino

How has business changed in the Tech Age? How will we all work differently in the future due to technology? Steve is an expert on the digital revolution and disruptive technologies who has worked in marketing for some of the world's largest companies and founded and sold a number of start-ups. Steve's presentation will surprise and delight you as to how recent some of the changes are and how much of an impact they have had on culture and economics.



Seminars Friday, 6 May

Hire & Events – An update on what's happening with Hire and the Events industry around Australia.

EWPA & TSHA – Find out the latest in safety, technical and training for Elevating Work Platforms and Telescopic Handlers.

General Information

REGISTRATION CENTRE

Register online here: www.hireconvention.com.au

Registration Open

Wednesday, 4 May 2016

12.00pm – 3.00pm – GCCEC, Foyer Hall 3

6.00-8.00pm – Sofitel Hotel Pool Deck

Thursday, 5 May 2016

7.45am – 5.00pm – GCCEC, Foyer Hall 3

Friday, 6 May 2016

8.00am – 12.00pm – GCCEC, Foyer Hall 3

Please collect your registration pack upon arrival. Your name badge identifies you as having registered. Please display your name badge at all times to avoid inconvenience.

Welcome Cocktails

Wednesday, 4 May 2016

6.30pm – 9.30pm

HIRE16 starts off at the Sofitel Hotel Pool Deck for the Welcome Cocktail evening. This event is included in your Delegate and Exhibitor registration or you may purchase tickets separately through the online booking form.

Best New Products

Best New Products for 3 categories: General, Access and Events will be displayed on the wall at HIRE16. Vote and go in the draw to win a case of wine delivered to your door.

HRIA Event Night

Thursday, 5 May 2016

7.00pm – 11.30pm

Join us for the HRIA Event Night at East Restaurant, Broadbeach (across the street from the Sofitel). This is the annual Events Dinner and more, open to everyone! You can enjoy fabulous finger food, entertainment and of course, networking! This event is not included in any registration package and must be purchased through the online booking form.

Hire Industry Excellence Awards

Friday, 6 May 2016

7.00pm – 11.30pm

This event sells out quickly so please make sure you purchase your tickets promptly. Dress code is dinner jacket, black tie or cocktail attire. Tickets will not be issued this year. Instead, Awards Dinner attendees will be asked to select their preferred table seating arrangements when registering. Entry to this event is not included in any registration package and must be purchased through the online booking form.

HIRE16 Connecting People Proudly Sponsored by:

PLATINUM	GOLD	SILVER	BRONZE
			SUPPORTER



HIRE INDUSTRY EXCELLENCE AWARDS

The culmination of the Hire and Rental Industry Association (HRIA) National Convention – HIRE16 – is the presentation and delivery of the Hire Industry Excellence Awards (HIEA) which recognise outstanding achievement and industry excellence.

The MC for the evening will be Barry McLeod.

The HIEA will be presented Friday, 6 May, 2016 at the Marriott Hotel in Surfers Paradise. With 10 categories, the HIEA focus the attention of the industry and pay tribute to the exceptional standards of service and innovation displayed throughout the sector.

The Hire Industry Excellence Awards cover the following categories:

- Rental Company of the Year – Over \$5m
- Rental Company of the Year – Under \$5m

- Rental Company of the Year – Events
- Supplier of the Year
- Supplier of the Year – Access
- Best New Product – General
- Best New Product – Events
- Best New Product - Access
- Best Exhibition Stand – Over 40m2
- Best Exhibition Stand – Under 40m2

The selection process for many of the award categories is managed by the industry itself; with much voting undertaken by HRIA members attending the two day annual Convention (this year on the Gold Coast). Supplier of the Year is nominated and voted on by the member companies purchasing and offering their equipment for rent.

Rental Company of the Year finalists are selected from nominations and judges then visit each Finalist to personally assess their operation and procedures.

Judges have always found it difficult to select the Finalists and often the selection comes down to distinct services or procedures which stand out from the rest.

Past judging panel representative Ross Hogan said: "There are major benefits for every company taking the time and effort to participate in the awards.

"Finalists all say they increased their business and saw increased respect from their customer base for their achievement.

"Just by completing a presentation, you get to investigate your company's Key Performance Indicators," Mr Hogan said.

NOW ON SHOW!
NEW METRO-POD LIGHTING TOWER & TOUCAN T10E
VISIT US ON STAND 55 AT HIRE16

Australia - 131 JLG New Zealand - 09 276 1728
www.jlg.com.au



EXHIBITION FLOORPLAN



EXHIBITOR	STAND NO	EXHIBITOR	STAND NO	EXHIBITOR	STAND NO
Access Service Australia	79	Baseplan Software	115	Finlease (Australia)	138
Ahern Australia	139	Baytex Australia	141	Flextool	93
Ahern Australia	A8	Clark Equipment	11	Floorex	9
Aim Site Hire	107	Club Car	G19	Fork Force Australia	6
Airdraulic Birco Group	69	Conplant	102	Formit Portable Toilets	34
Alloyfold	33	Crommelins Machinery	149	Genie	117
ASPAC Group	89	Data Signs	G18	Genie	A1
Australian Construction Products	92	Dingli Australia	A7	H-Line Structures	52
Australian Crane & Machinery	G24	Earthmoving Equipment Australia	G26	HATZ Diesel Australia	95
AWD Group	G22	Elev8 Australia	1	Haulotte Australia	77
BARTCO Visual Information Systems	31	Enirgi Power Storage	127	Haulotte Australia	A9

EXHIBITOR	STAND NO
Hilti	53
Hiretech	28
Hoppt Australia	98
HTS-Australia	26
Husqvarna Australia	3
Hydromat Services	G32
JCB Construction Equipment Australia	46
JLG Industries	55
JLG Industries	A10
Kanga Loaders	75
Kerrick Industrial Equipment	111
Kubota Tractor Australia	14
Kubota Tractor Australia	G31
Iri-tent Technology	74
Lumenate	G21
Makinex	51
MANITOU Australia	52
MCSANZ	81
Merlo Group Australia	84
Metrotest.Com	19
Milwaukee Power Tools	G34
Monitor Lifts	A6
Nifty	A11
Nilfisk	114
Nufurn	67
PETRO Industrial	148
Phillro Industries	30
Pinpoint Communications	133
Plant Assessor	13
Platform Sales Australia	G14
Point-of-Rental Software	72
Powell Industrial	128
Power Equipment	2
PowerGen Australia	96
Powerlite Generators	54
Pramac	68
Quick Ally Scaffolding & Access Solutions	73
R&J Batteries	21
Red Roo Sales & Service	154
Redstar	134
RIES Equipment	8
Shelter Tent Manufacturing Co	71
Skyjack	49
Skyjack	A13
Spanit	32
Spinefex	147
Spitwater	87
STIHL	20
STIHL	G15
Sullair Australia	24
Texada Software	153
TITAN Hoarding Systems	45
Toro	41
Toro	S3
Total Sanitation Solutions	G33
TRS	22
TVH Australasia	4
Vermeer Sales & Service	37
Vermeer Sales & Service	S1
Wacker Neuson	G28



HRIA ZONE

Meet us for a complimentary coffee or water at the HRIA Zone – we’re just inside the exhibition entrance!

Membership information will be available and HRIA & EWPA Board Members will be at the stand keen for a chat.

HRIA EVENT LOUNGE

Relax with us outdoors at the HRIA Events Lounge in the themed Airclad marquee.

Come and see the latest on trend events theming and enjoy a free coffee. Sponsored by AJ Gallagher.

DISCLAIMER

The HIRE16 floor plans remain the intellectual property of HRIA Ltd and shall not be reproduced or distributed unless written consent is granted by the HRIA. Soliciting information or distributing literature without the permission of the HRIA Ltd is strictly not permitted.

Access Service Australia

71 Bradman St, Acacia Ridge Qld 4110
Ph: 07 3219 5130
E: jessica.wiemers@accessservice.com.au
W: www.accessservice.com.au

Stand no: 79

Access Service Australia provides Sales and Service Support for a range of Elevating Work Platforms including Material Lifts, Vertical Mast Lifts, Self Propelled Scissor and Boom Lifts, Spider Lifts, Truck Mounted Boom Lifts and Catering Trucks. Committed to providing educated and informative support, we comply with Manufacturer, Workplace Health and Safety and Standards Australia requirements. We are privileged to represent multiple leading manufacturers of EWPs who provide training and support, along with our own in house training. This year we will be showcasing the Next Generation of Material Lifts - providing improved specifications, features, durability and performance.



Ahern Australia – Silver Sponsor

8-10 McIlwraith St, Wetherill Park NSW 2164
Ph: 0418 223 376
E: glenn.martin@ahernaustrialia.com.au
W: www.ahernaustrialia.com.au

Stand no: 139 + A8

Ahern Australia was formerly known as Snorkel Australia and is a part of the Ahern Group, which is a privately owned global company incorporating Snorkel Lifts Ltd, Xtreme Manufacturing and Ahern Rentals. Snorkel is recognised as a leading global supplier of Elevated Work Platforms and aftermarket services, the company has over 25 years' experience in the industry, boasting over 50 base model units of specialised lifting equipment. Our range provides safe and efficient working at heights, from 4m to 40m from personal one man lifts up to large boom lifts.

Aim Site Hire

14-16 The Nook, Bayswater VIC 3153
Ph: 0403 216 954
E: bsinclair@aimhire.com.au
hiring@aimhire.com.au
W: www.aimhire.com.au

www.boscontaineraus.com.au

Stand no: 107

Aim Hire is proud to bring a new product to Australia of interest to HRIA members. The new BOS Quick Build Container will be a huge asset to any hire fleet. The BOS portable storage units can be delivered flat pack to site and assembled within minutes. They are the perfect solution for tight locations and can be joined, stacked and dismantled just as easily. BOS Quick Build Containers are a versatile solution. BOS Containers are now available for hire or sales through Aim Hire.

Airdraulic Birco Group

1/33-35 Lwr Gibbes St, Chatswood NSW 2067
Ph: 0411 755 388
E: michael@abgpl.com.au
W: www.abgpl.com.au

Stand no: 69

Branches in Sydney, Brisbane, Melbourne and Perth. Since 1968 Airdraulic Birco Group have been supporting the Hire and Rental Industry here in Australia. For many we have been your first call for Pneumatic Tools, Pumps, Fans, Points and Chisels and the like. Recently ABG was appointed as distributor for CP Construction Tools, one of the most recognisable brand names in the construction and hire industries. We constantly strive to bring the best quality equipment and services to the HRIA. Our Eagle Trademark is your guarantee of quality and service.

Alloyfold

Unit 10, 33-39 Corporate Blvd, Bayswater VIC 3153
Ph: 1800 287 025
E: sales@alloyfold.com
W: www.alloyfold.com.au

Stand no: 33

Alloyfold is a leading distributor of the most durable commercial furniture on the market including blow-molded tables and lightweight event chairs. Alloyfold sells Australasia's largest range of robust, commercial grade tables which are designed specifically for intensive use in demanding commercial environments. Made from high strength materials, they are non-warping and heat resistant, stable when stacked and offer a range of configuration options. Alloyfold's range of rental and events chairs are lightweight, durable and long-lasting. Alloyfold offers a selection of stacking chairs, padded chairs and folding chairs including our Bella Evolution and Trilogy chairs.



ASPAC Group

3/84 Hallam South Rd, Hallam VIC 3803
Ph: 0432 040 747
E: martin@aspacgroup.com.au
W: www.aspacgroup.com.au

Stand no: 89

ASPAC Group proudly presents the one and only ATHENA Bi levelling scissor lift and the state of the art limited access spider lift the "Zeus". The highly anticipated release of the Athena really has taken the hire industry by storm. All trades are discovering the multitude of benefits the Athena can provide on just about every work site. In addition we will be showcasing two new releases in the range... The highly anticipated Lithium version and the NEW Pull out deck.

AWD Group – The Capital Equipment Specialists

25 Garner Pl, Ingleburn NSW 2565
Ph: 02 8795 4555 / 0451 527 914
E: alisondavey@awdgrp.com.au
W: www.awdgrp.com.au

Stand no: G22

The AWD Group have been providing capital equipment sales, service and parts support to the Australian and New Zealand market since 1999. We have built a strong and loyal customer base via a number of key products, being the Dieci Telehandler range and more recently, LiuGong Construction Equipment. The AWD Group has grown to offer clients the purchase of capital equipment and the ability to rent equipment via our rental arm, Rough Terrain Plant Hire, finance equipment seamlessly via the Groups finance arm, AWD Group Finance.

BARTCO Visual Information Systems

1 Westside Ave, Port Melbourne VIC 3207
Ph: 1300 306 106
E: sales@bartco.com.au
W: www.bartco.com.au

Stand no: 31

Bartco is a leading Australian manufacturer of Portable Solar Powered Road Traffic and Visual Management equipment, providing a product range and support services across the spectrum of Road Traffic Equipment and Visual Management Systems. Bartco's Products:

EVEN STRONGER
THE COMPACT UTILITY LOADER. REDEFINED.

THE ALL-NEW LIGHTWEIGHT TORO® TX 1000 compact utility loader with vertical lift loader arm lets you lift more with 453.6 kg rated operating capacity and work in tight spaces. It reaches over 23 m² dumpsters and 1,000 kg trucks with 2.06 m hinge pin height.

Check out the Toro TX 1000 at Toro stand no. 41, 5-6 May and find out more information on the great range of Toro construction products.

toro.com.au /toroaus /@toroaus You Tube /toroaustralia

- Portable and Permanent Directional Arrow Boards;
 - Electronic Fire Danger Rating Signs;
 - Portable and Permanent 5 Colour and Amber VMS;
 - Portable and Permanent VSLS;
 - Portable Fold Up VMS;
 - Portable Solar Traffic Light;
 - WebStudio and CurbSite apps.
- BARTCO'S Service Offering:
- 24/7 Phone and On-site Service Support;
 - Upgrades and Spare Parts;
 - Service & Preventative Maintenance;
 - Real-Time Internet Management;
 - WebStudio and CurbSite interface.



Baseplan Software Group – Bronze Sponsor

Suite 2, Level 1, 295 Pennant Hills Rd,
Thornleigh NSW 2120
Ph: 1300 837 142
E: nigel@baseplan.com
W: www.baseplan.com

Stand no: 115

Baseplan Software Group provides equipment and rental management software, in a fully integrated ERP solution, designed specifically to meet the needs of the industry. Baseplan Enterprise is a scalable, tightly integrated, modular software. Individually, the Sales, Rental, Service, Parts and Financial modules offer unrivalled control and visibility of business processes and supply chain management in all crucial sectors of your business. Together, they deliver a market-leading, seamless business management solution with endless benefits for your business. Supported by our company-wide focus on excellence in customer service, Baseplan Enterprise is the only true end-to-end fully integrated software solution on the market.

Baytex Australia

2/80 Somersby Falls Rd, Somersby NSW 2250
Ph: 02 4340 4144 / 0400 312 314
E: info@baytex.co.nz
W: www.baytex.com.au

Stand no: 141

Baytex is a leading international designer and manufacturer of Marquees, Fabric

Structures, Fabric Architecture, Commercial Tents and Lining Systems. With over 30 years of world-wide experience and numerous industry awards, Baytex has built a solid reputation for quality, design innovation and a 'Can-do!' attitude. Baytex is held in high regard for their range of premium and high-quality products, ease and speed of installation of their products, design innovation, simplicity, performance and style, commitment to after-sales service and support. Come and see what sets our business apart from the rest of the field!

Clark Equipment

21 Percival Rd, Smithfield NSW 2164
Ph: 02 9477 8444
E: peter.clancy@clarkequipment.com
W: www.clarkequipment.com

Stand no: 11

Clark Equipment prides itself on bringing the big names to market. Regardless of the industry you operate in, you will find market leading brands available to suit your equipment needs. The strengths of having equipment across different brands is that we can offer equipment solutions for your requirements today, and also for tomorrow. The brands distributed by Clark Equipment are chosen because we believe in them. We believe they offer value to customers, perform to the highest levels to get the job done right, and they fit into our brand family.



Club Car/ Ingersoll Rand

Suite 13/3 Richmond Ave, Sylvania Waters NSW 2224
Ph: 02 9522 6960
E: kevin_gates@clubcar.com
W: www.clubcar.com

Stand no: G19

The world's leading manufacturer of lightweight utility vehicles is expanding its engagement with the Australian hire and rental industry. Exhibiting for the first time at HIRE16, Club Car has a wide range of proven electric, petrol and diesel powered transportation and utility vehicles available to the industry. Already a major player in global rental markets, Club Car has over 55 years experience in the manufacture of tailored and ready to drive solutions to the challenges

faced by your customers. With regional management in country and a national network of independent distributors, Club Car is well placed to meet all of your lightweight utility needs.

Conplant

25 York Rd, Ingleburn NSW 2565
Ph: 02 9933 3100
E: liam.brosnan@conplant.com.au
W: www.conplant.com.au

Stand no: 102

CROMMELINSTM MACHINERY

Crommelins Machinery – Silver Sponsor

139 Welshpool Rd, Welshpool WA 6106
Ph: 0409 189 280 / 08 9350 5588
E: sales@crommelins.com.au
W: www.crommelins.com.au

Stand no: 149

Crommelins products are assembled and tested in Australia and are recognised for their quality, reliability and award winning national support. Crommelins Machinery manufacture an extensive range of Generators, Pumps, Pressure Cleaners, Wood Chippers, Concreting and Compacting products, powered by either Subaru petrol engines or Subaru, Hatz and Yanmar diesel engines. All Crommelins products can be ordered to comply with construction and mine site regulations for all Australian States. Crommelins Spare parts are consistently delivered within 24hours to all capital cities.

Data Signs

5 Grace Court, Sunshine West VIC 3020
Ph: 0477 100 992
E: michael@datasigns.com.au
W: www.datasigns.com.au

Stand no: G18

Data Signs is the largest manufacturer of Solar Powered Message Signs in the southern hemisphere. With over 40 years (circa 1976) in the industry, our products are sold nationally and exported to the Middle-East, Europe, and Asia-Pacific regions. Data Signs has embraced the very latest in LED technology to become a leader in all facets of electronic sign manufacturing. Products include: Variable Message Signs (VMS), Arrow-Boards and Portable Traffic Lights (PTL).



HOPPT AUSTRALIA - CONSTRUCTION EQUIPMENT QUALITY YOU CAN TRUST

Visit us at **Stand 98** at Hire 16



Ph: 02 8090 5999 Fax: 02 8521 6567 Email: sales@hoppt.com.au Web: www.hoppt.com.au

Dingli Australia

4/18-20 Prospect Pl, Berrinba QLD 4117
 Ph: 1300 623 622
 E: sales@dingliaustralia.com.au
 W: www.dingliaustralia.com.au

Stand no: A7

For the first time since 'Dingli Australia's' inception to the Australian market in 2010 we will be participating in the HRIA Convention. We are excited to introduce some unique product lines which will compliment your rental fleet and in some cases solve access issues for the end user too. Come on over to discuss your needs with our staff and to view our first class quality product lines. We look forward to greeting you.

Earthmoving Equipment Australia

8 Squill Pl, Arndell Park NSW 2148
 Ph: 0400 988 920 / 02 9671 1000
 E: belinda@eeaustralia.com.au
 W: www.eeaustralia.com.au

Stand no: G26

Earthmoving Equipment Australia is one of the fastest and most innovative earthmoving dealerships in Australia. We are the dealers for Case Construction Equipment, Thwaites & Bergmann Site Dumpers, Weber MT Compaction Equipment & Auger Torque Attachments. Our Service Department offers Full Fleet Maintenance from a team of professional service people that truly care about your machines and your business. Our Parts Department are qualified to assist you in providing genuine spare parts in a fast and efficient manner at the very best prices in the market. Experience the difference from a company who wants to support your success.

inspHire

rental software experts



Elev8 Australia

82 Beaufort St, Level 1, Perth WA 6000
 Ph: 08 9453 7400
 E: robyn@elev8australia.com
 W: www.elev8australia.com

Stand no: 1

Insphire 'Insphire Hire/Rental software solutions' inspHire Hire/Rental software is leader in the UK /Europe and has become the software of choice for Hire and Rental companies around Australia and New Zealand. Aside from inspHire's reputation for being highly functional,

customisable and a well supported product inspHire has several powerful add on modules that are well suited for the Australian/NZ business environment. inspHire PPSR module – Provides users with an automated means to register and de-register classified equipment with the PPSA web portal online and completely transparent to the user. InspHires users do little more than they normally do in day to day hiring and off hiring equipment contracts. Behind the scenes our PPSR module is handling all the registration tasks with the PPSA logging each transaction in a local audit file. inspHire mobile – Is both Windows and Android compatible, providing users with a 'remote' office ability in dealing with hire contracts.

enirgi
 power storage

Enirgi Power Storage

Lv 1, Building 10, 658 Church St, Richmond VIC 3121
 Ph: 1300 783 879
 E: dbonthorne@enirgi.com
 W: www.enirgi.com

Stand no: 127

We are one of Australasia's leading suppliers of batteries, capable of supporting every commercial and lifestyle need. Enirgi Power Storage is the first fully integrated national power storage company that can take care of the full life cycle of batteries – from supplying new batteries, collecting the old ones and then recycling them. We are your battery specialists. Our goal is to look after the diverse battery and power storage needs of our customers, ranging from small businesses, through to national companies with large vehicle fleets and extensive industrial facilities. Enirgi Power Storage is part of the international Enirgi Group.

finlease

Finlease (Australia) – Supporting Sponsor

Ground Floor, 1 James Pl, North Sydney NSW 2060
 Ph: 02 8404 2000

E: finlease@finlease.com.au
 W: www.finlease.com.au

Stand no: 138

For the past 25 years, Finlease has been making life easier for small to medium sized businesses for equipment and vehicle finance in the hire and access, crane, construction, civil sectors and beyond. Financing over \$400mil p/a in equipment finance for private business and with a national network of 13 offices, Finlease has a track record of establishing long term relationships with clients and spreading equipment debt requirements over a broad base of competitive underwriting financiers and banks. The key role is one of advocacy, ensuring the client is well represented, the right outcomes are negotiated and clients assisted through good and bad times.



Flextool – Silver Sponsor

7 Lucca Rd, Wyong NSW 2259
 Ph: 1300 737 787
 W: www.flextool.com.au

Stand no: 93

Flextool offers over 60 years experience servicing the rental, construction, civil and concrete industries. With stores Australia-wide, Flextool is dedicated to providing customer service including technical advice and after sales support. Supplying industry leading brands we offer the most complete range of tools and equipment for soil compaction, surface preparation, concrete placement, concrete vibration, concrete finishing and pumping products on the market. Flextool also has a national network of services and workshop capabilities that provides expertise for prompt, efficient service of a wide range of portable equipment.

Floorex Products

11 Jennings Rd, Swan Hill VIC 3585
 Ph: 0437 080 375
 E: haydn@floorex.com.au
 W: www.floorex.com.au

Stand no: 9

Hire Companies love the quality and ruggedness of the Floorex Floor Preparation equipment. The need for Diamond Grinding

GET EQUIPPED AT HIRE16
 SITES 37 & S1

Vermeer
 EQUIPPED TO DO MORE.

machines, Screed Mixing machines, Concrete Scarifiers, Floor Scrapers to remove old floor coverings, tiles and coatings and Shotblasters is increasing, but so is the need for super rugged machines capable of withstanding the rigours of the hire customer. Visit us and be treated to our display of these super rugged machines, many of them made right here in Australia by Floorex, and see these high Return on Investment machines yourself.

Fork Force Australia

3 Perivale St, Darra QLD 4076
Ph: 1300 423675
E: sales@forkforce.com
W: www.forkforce.com

Stand no: 6

Fork Force Australia is one of Australia's largest fully independent and 100% Australian owned and operated forklift and telehandler dealers. For nearly 20 years, Fork Force has specialised in the sale, hire and service of both new and used forklifts and more recently telehandlers.

Fork Force is the exclusive national importer and distributor of Enforcer, Maximal and AUSA rough terrain forklifts and telehandlers. Ranging from 1-32 tonne, and available with a range of flexible ownership options including Rent-To-Own. Fork Force has over 1,400 forklifts, telehandlers and attachments in our hire fleet, ranging from 1 tonne to 52 tonne and can tailor a competitive rental package to suit your needs from one day to seven years.

Formit Services

4 / 1 Co-Wyn Cl, Fountaindale NSW 2558
Ph: 02 4336 1000 / 0407 104 057
E: james.robertson@formit.com.au
W: http://formit.com.au

Stand no: 34

Formit Portable Toilets are Australia's leading manufacturer and supplier of top quality portable toilets to the Australian hire industry.

All our manufacturing takes place at Formit's specialty roto moulding and forming facility located on the NSW Central Coast. Formit toilets are designed in Australia, made and tested to withstand Australian conditions – some of the toughest in the world. Our products are gaining international recognition for their superior quality and Formit now exports to 12 countries worldwide. Awarded the Central Coast's Exporter of the Year Award in 2015.



Genie – Platinum Sponsor

33 Kimberley St, Darra QLD 4076
Ph: 07 3456 4420
E: Catherine.Kerton@terex.com
W: www.genielift.com.au

Stand no: 117 + A1

In our 50th year Genie is proud to be Platinum sponsors of HRIA 2016. We are showcasing the new Genie360 Support initiative which will provide complete end-to-end solutions for your fleet. On display will be the new Genie SX-150 boom lift, an extension of the super boom product line. The SX-150 boom lift is a versatile workhorse that provides full capacity in the complete working envelope. Also on show is a true all-rounder, the Genie GS-4047 scissor lift, which combines a small footprint with the ability to reach heights of close to 14m. Likewise the Genie Z-33/18 boom lift will be displayed and it combines the benefits of a genuine electric indoor machine with the versatility and durability to perform outdoor routine maintenance tasks. On the Genie outside stand will be the new generation of Genie telehandlers. A combination of compact and high reach performance telehandlers to cover customers' requirements. Marking half a century of serving aerial markets around the world, Genie, the Aerial Work Platforms (AWP) segment of Terex Corporation, is celebrating the major milestone anniversary with its customers worldwide. Underscoring its 50-year legacy, Genie has become a truly global presence, operating in 80 countries, including Australia and New Zealand, making it the number one aerial work platform manufacturer in the world*. Genie, which was founded when Bud Bushnell bought the manufacturing rights to a material lift that operated on compressed air. Customers seemed to be impressed with the magic in the bottle that was used to raise and lower the hoist - hence, the Genie name was born. As demand for material lifts and aerial work platforms has grown, products such as man-lifts, stick booms, articulated booms, light towers and telehandlers

have been added to the Genie product line. Since 1966, Genie has gone above and beyond in its product development efforts, focusing on what customers need to be successful in their industries and applications. Genie innovations are changing the market and setting the industry standard for quality, reliability and safety in aerial lift equipment. Over the last five decades, Genie has become known for developing innovative products that make working at height more productive. *Based on 2014 aerial work platform global equipment revenue (Access International, May/June 2015). Includes powered access manufacturers. Excludes telehandlers and manufacturers of non-powered access equipment.

H-Line Structures Australia

31 Vanity St, Toowoomba QLD 4350
Ph: 0428 937 301
E: sales@hlinestructures.com.au
W: www.hlinestructures.com.au

Stand no: 52

H-Line is a leading supplier of quality temporary and semi-permanent marquee structures and also specialises in industrial cleaning machinery. H-Line is the official agent for Roder Zelt GmbH and Hoecker UK for the Australasian Region. Our lightweight, flexible, transportable and relocatable building solutions are currently used across a wide range of market sectors including: functions and events, resorts and accommodation, industrial and mining, defence disaster mitigation, equine sporting and leisure. H-Line's structures and marquees are of the highest quality and are engineered to meet the Building Codes of Australia and conform to regulations including wind speed and fire requirements for PVC fabrics.

HATZ Diesel Australia

7 Hume Rd, Smithfield NSW 2164
Ph: 02 8788 7999
E: engines@hatz.com.au
W: www.hatz.com.au

Stand no: 95

A new generation of watercooled, turbocharged – German-made Hatz diesel engines are now available in Australia to complement the world renowned air-cooled range. This new engine family will extend the HATZ product portfolio. The 4H50TIC Tier IV & 4H50TI Tier II watercooled and intercooled turbocharged, 4-cylinder diesel engines. HATZ is relying on Bosch common-rail

THE NEW ELECTRIC SLAB SCISSOR LIFT

VISIT US AT **STAND 139**

SOLD & SERVICED BY



- » Sales 1300 900 700
- » Technical support 1300 700 450
- » Parts and service 1300 103 040

WWW.AHERNAUSTRALIA.COM.AU

technology with excellent fuel consumption and external exhaust gas recirculation. EPA certified to Tier IV final. The new Hatz 4H50 excels as a compact, lightweight and robust design. Setting new standards in the performance class up to 62kW. This is a true industrial diesel engine, designed for heavy-duty applications.



Haulotte Australia – Bronze Sponsor

46 Greens Rd, Dandenong South VIC 3175
Ph: 03 8710 1000
E: rkerr@haulotte.com
W: www.haulotte.com.au

Stand no: 77 + A9

Haulotte Group is a market leading designer, manufacturer and distributor of quality Elevating Work Platforms, trailer mounted EWP's, Telehandlers and access equipment. Haulotte have branches in all major Australian Capital cities, providing sales, service and parts support. In an endeavour to comply with the ever changing marketplace and relevant safety standards of today, Haulotte Australia's equipment has some unique features such as the platform overload protection systems on our range of Booms and Scissors. The Haulotte Group is a quality accredited company (ISO 9001) and has developed a reputation for producing quality units. All products meet or exceed the requirements of Australian Standards AS1418.10.



Hilti (Aust)

718 Kingsford Smith Dr, Hamilton QLD 4007
Ph: 131 292
E: serviceaustralia@hilti.com
W: www.hilti.com.au

Stand no: 53

Hilti is a global leader of value-added, top quality products for construction professionals. Hilti develops, manufactures and markets innovative and technologically advanced systems to help increase the productivity of our

customers. Our products cover drilling and demolition systems, diamond coring, cutting, grinding and chasing systems, laser measuring and levelling systems, cordless tools and fastening systems. Hilti products are designed to help customers save time and money and get the job done safely. Systems such as ATC (Active Torque Control), AVR (Active Vibration Reduction) and DRS (Dust Removal Systems), are incorporated into many tools to produce a safer and more productive working environment.

Hiretech

Unit 2, 62 Owen St, Glendenning NSW 2761
Ph: 0417 256 920
E: sales@hiretech.com.au
W: www.hiretech.com.au

Stand no: 28

Hiretech is the leading supplier of floor sanding equipment in Australia. With over 30 years experience servicing the hire and rental industry, Hiretech has been awarded the HRIA Supplier of the Year Award eight times, most recently in 2015. Manufactured in the UK, the Hiretech range of floor sanding machines is renowned for its incomparable quality, reliability and performance. Learn more about the range on the brand new Hiretech Australia website. Mark Rogers, the owner of Hiretech UK will be joining David and Chris at this year's convention. Visit them to discuss once-a-year convention specials.



Hoppt Australia – Silver Sponsor

Unit 3, 12 Burns Rd, Heathcote NSW 2233
Ph: 02 8090 5999
E: peter.evans@hoppt.com.au
W: www.hoppt.com.au

Stand no: 98

Founded in 1975, HOPPT has expanded to what is a globally recognised manufacturer of light construction equipment. Now Hoppt Australia is proud to be a Silver sponsor at HIRE16. Our exciting range of world class equipment includes Rollers, Rammers, Compactors, Ride on Trowels, Concrete Saws, Concrete Vibrators and much more. Inspect the new HOPPT Pavement

Compactor with a unique rubber roll-bar system designed specifically for pavers. Also on display are the CTP60 and CTP90 plate compactors with vibration reduction design providing greater operator comfort and manoeuvrability. Inspect the full range on Stand 98 or call Peter on 0412 64 64 63.



HRIA EWPA TSHA

PO Box 1304, Mona Vale NSW 1660
Ph: 02 9998 2255
E: info@hireandrental.com.au
W: www.hireandrental.com.au

HRIA Zone + HRIA Events Lounge

With over 700 rental company members and valued at \$4.8bn (IBIS), the Hire and Rental Industry Association (HRIA) covers a range of equipment across varied industries. The HRIA maintains a close eye on changes to safety legislation and works with its members and regulators to develop national codes of business management to ensure safety measures are identified and implemented.

The Elevating Work Platform Association of Australia (EWPA)

is the industry body representing manufacturers, suppliers, rental companies, owner/users and service providers. Formed in 1987, the association has more than 400 member companies.

The Telescopic Handler Association of Australia (TSHA)

has been formed to manage all aspects of the versatile telescopic handler and address market confusion about compliance and safety issues. Officially convened in December 2011, the TSHA has set its goals and plans to provide the tools to develop and educate industry in the safe and effective use of the telescopic handler.

HTS Australia

15 Ketch Cl, Fountaindale NSW 2258
Ph: 02 4388 3076
E: jeff@hts-australia.com.au
E: roger@hts-australia.com.au
W: www.hts-australia.com.au

Stand no: 26

HTS AUSTRALIA is the official Australian

CHOOSE CROMMELINS™ SUBARU PRODUCTS & WIN*



Full terms at www.crommelins.com.au/carpromo

**BUY A CROMMELINS™
BRANDED PRODUCT
POWERED BY A
SUBARU & RECEIVE
AN ENTRY TO WIN A
SUBARU IMPREZA
WORTH \$24,990!***

**HIRE16
SILVER
SPONSOR**
Stand 149

**CROMMELINS™
MACHINERY**
www.crommelins.com.au



SUBARU
Industrial
Power
Products

subsidiary of German based Röder HTS Höcker, the award winning company specialising in the design, manufacture and supply of temporary and semi-permanent clear-span demountable tent systems. It supplies both the private and public sectors including the hospitality and events industry, the military, aid organisations, retail and general industry. The company manufactures a diverse range of self-supporting, modular clear-span tent structures which are available in clear-span widths ranging from 3m-60m.

Husqvarna Construction Products

4 Pioneer Ave, Tuggerah NSW 2259
Ph: 1300 487 782
W: www.husqvarna.com/au/construction/home/

Stand no: 3

Husqvarna Construction Products is a part of Husqvarna AB. We provide innovative quality products & solutions to make construction easier for professionals & consumers. We are an all-round solution provider for concrete, tile and masonry applications for cutting, coring, grinding and sawing your projects. Our sales companies and retailers can provide the right products, service and support to suit your needs and help you to get the job done. Our ambition is to continue developing intelligent, cutting-edge solutions that combine high professional performance making work easier, productive & rewarding.

Hydromat Services

2/71 Richland Ave, Coopers Plains QLD 4108
Ph: 07 3216 6252
E: martin@hydromat.com.au
W: www.hydromat.com.au

Stand no: G32

Hydromat Services, Australian manufacturer and distributor of industrial cleaning equipment. Established in 1996, Hydromat Services is a Queensland based manufacturer of heavy duty, high quality, high pressure water cleaners. Equipment manufactured covers electric, petrol and diesel engine driven high pressure pumps, cold and/or hot water from 100bar/1500psi through to 500bar/7300psi pressure and up to 2001 per minute flow. See industry leading Diamond Frame machines and CleanPro Trailers.

JCB Construction Equipment Australia

112-116 Long St, Smithfield NSW 2164
Ph: 02 8788 8513
E: j.reid@jcbcea.com.au
W: <http://jcbcea.com.au/>

Stand no: 46

JCB Construction Equipment Australia is the local distributor for the global JCB brand of equipment, the world's third largest manufacturer of construction equipment. With six company owned operations in the capital cities and over 60 dealers spread across regional Australia, JCB Construction Equipment Australia's product range spans the full spectrum of construction and agricultural equipment from backhoes, mini excavators, wheel loaders and telehandlers to compaction equipment, hydraulic excavators, skidsteers, forklifts, and Fastractors. JCB Construction Equipment Australia's nation wide network is committed to providing customers with backup service and support 24/7.



JLG Industries – Gold Sponsor

358 Park Rd, Regents Park NSW 2143
Ph: 02 8718 6353
www.jlg.com.au

Stand no: 55 + A10

JLG Industries, Inc is the world's leading designer, manufacturer and marketer of access equipment and telescopic material handlers. The company's diverse product portfolio includes leading brands such as JLG aerial work platforms and an array of complementary services and accessories that increase the versatility and efficiency of these products. JLG is a subsidiary of Oshkosh Corporation. JLG Industries (Australia) also manufactures a range of Australian built Mobile Lighting Towers. JLG Industries has been established and operating in Australia and New Zealand since 1983 and proudly supports the Hire Industry. We have branches located in Sydney, Melbourne, Adelaide, Perth, Brisbane, Port Macquarie, Auckland (New Zealand) and most recently Darwin. JLG Industries Australia offers our customers a wide range of services including Sales of New and Used Machines, Spare parts and Accessories, Service and preventative maintenance Programs, Repair and rebuild, Technical support and training, Testing and Valuations. JLG Industries Australia is fully supported by the strength of our parent company, Oshkosh Corporation.

Kanga Loaders Global

4 Octal St, Yatala QLD 4207
Ph: 03 8793 6600
E: brookes@kangaloader.com
W: www.kangaloader.com

Stand no: 75

Make sure you check out the Kanga Loaders stand at this year's show. Kanga Loaders are the world's leading mini loader with over 36 years in design and manufacturing experience. With six models and over 70 attachments available Kanga has the solutions to make your jobs easier. The Kanga Loader is easier to drive, safer, tougher and better built so if you are looking for quality, performance, reliability and safety, look no further than Kanga Loaders. We'll be releasing the new Kanga 835 Series Loader at the Show, so pop in and check it out.

Kerrick Industrial Equipment

126 Robinson Rd, Geebung, QLD 4034
Ph: 02 9737 9797
E: sales@kerrick.com.au
W: www.kerrick.com.au

Stand no: 111

Kerrick specialises in commercial, industrial and heavy duty cleaning equipment. They have worked with the hire and rental market for many years and understand the need for user friendly, robust, reliable equipment. Kerrick's product range includes industrial pressure washers, steam cleaners, vacuum cleaners, carpet extractors, lifts and gantry as well as custom built trailer, truck and skid mounted jettiers. They also supply the full range of parts and accessories to keep your gear performing in peak condition.

Kubota Tractor Australia

25-29 Ermas Way, Truganina VIC 3029
Ph: 03 9394 4400
E: brett.huston@kubota.com
W: www.kubota.com.au

Stand no: 14 & G31

Kubota's extensive product range is renowned for its high performance, durability and reliability. Our equipment range extends to agriculture, construction and power equipment and is specifically engineered to excel in Australia's tough and diverse conditions. Kubota equipment is a favourite of independent contractors and hire companies, continually holding the position of market leader. Kubota continues to develop and introduce new products across the mini excavator, wheel and track

Visit Stands 134 & 137 for exclusive convention deals on diesel equipment



PLUS enter in the draw to win a JCB cooler box complete with a drinks voucher to fill it up!



HRIA
SILVER
SPONSOR

REDSTAR
Passionate about Value

loader and diesel generator markets. All Kubota equipment is distributed and serviced through an authorised dealer network with over 140 dealers Australia-wide.

Liri-Tent Technology

No 7 Dongfu Street, Xinqing Science & Technology Industrial Park
Zhuhai Guangdong China
Ph: +86-756-6250702
E: market@liri-tents.com
W: www.liri-tents.com/en;
www.liri-structure.com

Stand no: 74

Established in 1997 and as the 1st aluminum clear span tents manufacturer in China, Liri Tent Technology Co has been awarded 'Famous Trademark' and the only 'High-tech Enterprise' in the tent industry. The company is mainly engaging in tent design, manufacture, sales and rental of high-quality aluminum clear span structure systems. While Liri covers the largest tent production base around the world. Having been through the trials and hardships for almost 20 years, Liri Tent has reached total assets of 120 million RMB and nearly 500 employees, which is the largest tent manufacturer in China.

Luminate

31 Mailey Crest, Parafield Gardens SA 5107
Ph: 0439 879 604
E: nheysen@adam.com.au
W: www.luminate.com.au

Stand no: G21

Luminate LED Solar Lighting Tower. All terrain mobile lighting tower generating power from the sun storing the energy in batteries to produce over 120h of continuous light when the batteries are fully charged. No globes, no noise, no flash burn, virtually free to run, easy to set up and incredibly durable. The tower has a backup generator, which will charge the batteries within five hours. The LEDs can be set to turn on and off at any time or automatically at dusk and dawn. With minespecs and no prestarts, fortnightly servicing or expensive globes this new Luminate tower is a must for any business trying to find new ways to save money.



Makinex – Bronze Sponsor

15 Waltham St, Artarmon NSW 2064
Ph: 1300 795 953
E: e.morgan@makinex.com.au
W: www.makinex.com.au

Stand no: 51

Makinex is an Australian owned private company that have been experts in the design, development and distribution

of innovative products since 2004, providing solutions to the construction, landscaping, equipment hire, infrastructure and related industries. Makinex is about making inefficiencies extinct, where the name itself comes from this driving force. Makinex strives towards continuous improvement by looking closely at our business to find unique, innovative and practical product solutions that provide a better way to do jobs to save time, physical effort and money. With plans to expand the existing designed product range, growth in local and global markets and a commitment to ongoing research and development, Makinex is experiencing tremendous growth, particularly in our own line of products.

Manitou Australia

94-96 Euston Rd, Alexandria NSW 2015
Ph: 02 9517 3174
E: a.tenneguni@manitou-group.com
W: www.manitou.com

Stand no: S2

Manitou Group, world-leader in all-terrain material-handling, designs, manufactures, distributes and services equipment for construction, agriculture and the industries. Manitou Australia, (is based in Alexandria, Sydney) is a subsidiary of the Manitou group, THE reference in material handling. The group designs, manufactures and distributes material-handling solutions for the construction, agricultural and industrial sectors. Manitou realised a revenue in 2013 of €1,176m (nearly three fourths of which internationally) under the brand names Manitou, Gehl, Mustang, Loc and Edge, through 1,400 independent dealers in over 120 countries.

MCS Hire and Rental Software

4/151-153 Pacific Hwy, Hornsby NSW 2077
Ph: 02 9477 1355
E: sales@mcsanz.com.au
W: mcshiresoftware.com.au

Stand no: 81

50% of the 2015 HRIA Awards finalists use MCS hire software, from single branch businesses to some of the biggest names in plant & tool hire. Be sure to visit stand 81 to find out why. MCS-rm gives your team the power to improve the performance of your hire business with a bundle of cloud based tools that increase productivity and keep your sales pipeline filled with MCS-CRM Sales and Marketing. Based on the latest Microsoft. Net technology, MCS-rm links to all leading accounting applications.

Merlo Group Australia

120 Toongabbie Rd, Girraween NSW 2145
Ph: 02 9688 0600 / 0487 774 877
E: cwilson@merloaustralia.com.au
W: www.merloaustralia.com.au

Stand no: 84

The Merlo brand is synonymous with advanced technology in the field of telescopic handlers. Since 1964 the group's history has been full of ideas, tenacity and passion. Together these characteristics form the cornerstone of an industrial group that has developed a highly successful range of products. The result is every machine built is an industry leader in terms of design, power and in its respect for both the end user and the environment. Merlo Group manufacture a range of compact and manoeuvrable machines that offer unparalleled comfort, efficiency and above all, safety.

Metrotest.Com

211 Middle Renwick Rd, Marlborough NZ 7271
Ph: 1800 789 973 / 0800 638 768
E: help@metrotest.com
W: www.metrotest.com

Stand no: 19

Cut compliance costs... gain revenue and new customers... interested? Many companies have had huge increases in compliance costs for electrical certs/testing 'n tagging. Metrotests' core business is electrical safety – we've had a long association with big and small hire companies in Australia and New Zealand. We'd like to grow this further and are about to introduce a whole new concept for testing – this could likely help to grow your business and reduce costs. Come and see the world's most advanced testing system developed by us and our Polish Partners.



Milwaukee Tools

21 Kelletts Rd, Rowville VIC 3178
Ph: 0429 881 429
sam.burke@milwaukeetools.com.au
www.milwaukeetools.com.au

Stand no: G34

Milwaukee Tools is an industry-leading manufacturer of heavy-duty power tools, accessories and hand tools for professional users worldwide. Since the company began in 1924, Milwaukee Tools has led the industry in durability and performance. With an unwavering commitment to the trades, Milwaukee leads with a focus on innovative, trade-specific solutions. Whether it is through their leadership in Lithium-Ion technology, as seen in the M12, M18 & M28 Systems, time-saving accessories or innovative hand tool products, Milwaukee is dedicated to delivering advanced solutions for the trades that offer increased productivity and



BASEPLAN SOFTWARE...
WHEN TECHNOLOGY IMPROVES PRODUCTIVITY



Visit us at stand
#115

unmatched durability. Milwaukee takes the time to understand the demands of a constantly changing workplace and how they can best deliver solutions that help the user work both faster and smarter. Milwaukee knows professional users sweat the small stuff, and so do they.

monitor LIFTS

Monitor Lifts

143 Gunnedah Rd, Tamworth NSW 2340
Ph: 02 6755 6000
E: benjoyce@monitor.net.au
W: www.monitor.net.au

Stand no: A6

"Specialised Access Solutions with Dedicated Customer Support". That's the difference. In 1997, Monitor Lifts introduced the first Spider Lift into the Australasian market. Monitor Lifts are the leading supplier of Spider Lifts and specialised access equipment in Australia and New Zealand. Monitor Lifts provide sales, hire and service support in all major cities across the two countries. National product support is what makes Monitor Lifts unique. Product training is conducted regularly throughout Australasia, and a national network of factory-trained service outlets ensures the highest standard of backup care and technical support is available for all Monitor Lifts owners and operators. With a comprehensive range of Spider Lift models, there is a machine to suit almost every difficult access application.

Nifty

11 Kennington Dr, Tomago NSW 2322
Ph: 0412 455 622
E: jking@niftylift.com.au
W: www.niftylift.com.au

Stand no: A11

2016 heralds the release of our 28m Hybrid Boom EWP. Nifty's compact and low weight articulation booms offer maximum performance and reliability. Innovations such as SiOPS, ToughCage and Hybrid technology give Niftylift Elevating Work Platforms, boom lifts and work platforms a sizeable advantage in terms of safety and environmental consciousness. Our products include Trailer Mounted EWPs, Self Propelled Boom Lifts, Self Drive Work Platforms, Track Drive Access Platforms and Static Base Lift Platforms.

Nilfisk

Unit 1, 13 Bessemer St, Blacktown NSW 2148
Ph: 1300 556 710
E: diane.tannous@nilfisk.com
W: www.nilfisk.com.au

Stand no: 114

Nilfisk has been developing cleaning equipment for more than 110 years and is one of the world's leading manufacturers of professional cleaning equipment. The Nilfisk portfolio includes a range of sweepers, scrubbers, vacuums and high pressure cleaners suitable for all cleaning tasks across every industry. Nilfisk solutions help customers around the world keep their facilities and homes clean while ensuring they maximise return on investment, minimise costs and enjoy easy-to-use, reliable products designed with the environment in mind.

Nufurn

12/350 Edgar St, Condell Park NSW 2200
Ph: 1800 650 019
E: con.pappas@nufurn.com.au
W: www.nufurn.com.au

Stand no: 67

Nufurn – Commercial Furniture Solutions Established since 1996, Nufurn is a leading supplier of event chairs, tables and equipment to the Australian Rental Industry. The industry leading Nufurn Barrel chair is AFRDI approved to AS/NZS 3813:1998 – the highest rating available for a monobloc resin chair. In fact our Barrel chair is rated to 50% above this standard, to 300kg and comes with a 10 year warranty. The US Patented Nufurn Gladiator and Wimbledon resin folding chairs have steel reinforced rear legs and a 10 year warranty. They will not bend and buckle like non reinforced chairs do and are the only chairs in their class to pass the tough BIFMA 5.1 Standard – rated to 227kg. Nufurn also specialise in Chiavaris, bentwood chairs, stacking bar stools, banquet tables, banquet seating, drybars, staging, dance floors, chair and table trolleys and more.

PETRO Industrial

Factory 2, 106 Potassium St, Narangba QLD 4504
Ph: 07 3204 9558
E: sales@petroindustrial.com.au
W: www.petroind.com

Stand no: 148

PETRO Industrial is a leading manufacturer, marketer and supplier of commercial refuelling and lubrication storage and

dispensing equipment globally. PETRO manufactures and markets an extensive range of containerised self bunded tanks suitable for the storage and dispensing of diesel, petrol (gasoline), aviation fuels, lubricants, diesel exhaust fluid (DEF), and waste oil. Our self bunded tanks range in size from 450L through to 200 000L. PETRO is a major supplier of leading global brands and equipment including, pumps, filters, meters, hose, nozzles, electronic fluids management systems and automatic tank gauging systems. The PETRO Industrial team has been handpicked and brings a wealth of both petroleum company and equipment supply, engineering and specification experience.

Phillro Industries

1/265 Wickham Rd, Moorabbin VIC 3189
Ph: 03 8645 2900
E: sales@phillro.com.au
W: www.phillro.com.au

Stand no: 30

Phillro Industries has been established for over 45 years as a specialist supplier of high quality, reliable coating application equipment, fluid handling, coating inspection instruments and much more. Our vast range continues to meet or exceed the exacting requirements of industry and bring to you the most up-to-date, innovative products available. Offering quality leading brands such as Graco Airless Spray and Line Marking Equipment, Elcometer Concrete and Coatings Inspection Equipment, DeVilbiss Spray Guns and Accessories and many more quality complimentary products.

PINPOINT

GPS · TELEMATICS · ASSETS

Pinpoint Communications

Suite 5/ 1059-1063 Victoria Rd, West Ryde NSW 2114
Ph: 02 9804 1764
E: avlsales@pinpointcomms.com.au
W: www.pinpointcomms.com.au

Stand no: 133

HRIA members use the Pinpoint AVM system to improve security and increase productivity of key assets. The AVM System will help you: Detect and Recover assets in the event of theft; Identify use of plant outside operating hours; accurately bill customers for equipment usage based on real time data; quickly settle invoice disputes with accurate proof of service data. Pinpoint



For more information contact your local branch on 1300 737 787 www.parchem.com.au

Flextool - a division of Parchem Construction Supplies Pty Ltd.

Communications is an Australian operated company manufacturing GPS hardware and mobility software for the collection and distribution of remote data. Over the past 15 years Pinpoint has delivered solutions for OH&S compliance, productivity and operational savings.

Plant Assessor

1/45 Bonville Ave, Thornton NSW 2322
Ph: 0467 728 852
E: tklaassen@assessor.com.au
W: www.assessor.com.au

Stand no: 13

Suppliers, owners and users of plant and equipment in Australia have clear and specific legislative obligations relating to safety management. Plant Assessor is the market leader in the area of plant risk assessment and associated services. Plant Assessor has a range of solutions to assist owners and users manage equipment and plant safety obligations – quickly, simply and thoroughly. Whether you want to outsource or take care of plant and machine safety management in house, Plant Assessor can help you. We would love to show you how we make machinery safety easy. Come and see our newest developments – Digital Pre Ops, Machine Library and Sharing.

Platform Sales Australia

13/21 Bay Rd, Taren Point NSW 2229
Ph: 0418 119 600
E: david@platformsales.com.au
W: www.platformsales.com.au

Stand no: G14

Platform Sales was born in 2007, to import and distribute the more specialised of EWP equipment from the top performing hire based European EWP manufacturers. Our aim was to assess why these machines were more favoured and within a short time it was clear. Design philosophy was the key. For a machine to excel in its class, it must not only have an all-round class leading spec, but it must be reliable so as to reduce the overall cost of ownership. This year we are showcasing the CTE-TRACCESS Spider lift range. CTE Traccess is such a machine that derived from a design philosophy that eliminates the extra governances that plague other designs, all the time providing unmatched performance spec, with peace of mind in a fixed work envelope for better reliability. Make work easy with CTE and TRACCESS, it represents what spider ownership should be.



Point of Rental Software – Bronze Sponsor

41-43 Keysborough Ave, Keysborough VIC 3173
Ph: 03 8518 4296

E: sales@point-of-rental.com
W: www.point-of-rental.com.au

Stand no: 72

Point of Rental Software provides award-winning rental and inventory management solutions to thousands of companies worldwide. Founded in 1983, the company offers smart, scalable software designed for rental companies of all sizes and industries. Point of Rental Elite delivers a customised ERP software for world-class rental corporations. Point of Rental Expert is a full-featured rental management software that optimises complex operations for advanced rental businesses. And, Point of Rental Essentials is a cloud-based rental and inventory software that streamlines business for straightforward rental operations.



Powell Industrial

1/76 Postle St, Coopers Plains QLD 4108
Ph: 0437 345 329
E: mattp@powellindustrial.com.au
W: www.powellindustrial.com.au

Stand no: 128

Powell Industrial is Australia's largest independently owned hose, fittings and rubber company. At Powell we are committed to our key values of: Best Service, Best Value, Best Advice. We are proud to be a member of the HRIA and strive to service this market through our large product range including pre-fitted ready to go contractors' suction hoses, air compressor hoses, portable sanitation products as well as products for the vacuum truck pumping market. Powell Industrial has a range of hoses, fittings and rubber products for a host of industries including mining, civil construction, agriculture and irrigation, and waste management. Powell Industrial can assist with product selection or the direct sourcing of industrial hose, fitting or rubber products.

Power Equipment - Yanmar/JCB DieselMax

10-12 Commercial Dr, Lynbrook VIC 3975
Ph: 1800 069 469
E: info@powerequipment.com.au
W: www.powerequipment.com.au

Stand no: 2

Power Equipment is the exclusive and authorised Australian distributor of Yanmar Industrial diesel engines and JCB DieselMax engines. Featuring a wide range of market leading diesel engines and pumps ranging from 3kW to 120kW and generators from 2.2 to 45kVA. Reliability, quality and safety are at the core of what we do.



PowerGen Australia

1/20 Bluett Dr, Smeaton Grange NSW 2567
Ph: 0499 111 599
E: paul@powergenaustralia.com.au
W: www.powergenaustralia.com.au

Stand no: 96

PowerGen Australia is the sole distributor for TecnoGen Generators in Australia. We have extensive stocks of new equipment as well as consumables and spare parts. A number of our technical and commercial support team originate from major generator suppliers and have considerable product and application knowledge. TecnoGen Italy has almost 20 years experience in the production of diesel-powered generators with a production of over 35,000 units per year through three production plants in Italy and distributing to more than 50 countries. TecnoGen also has worldwide offices in UK, Germany and Singapore.

Powerlite Generators

2 Binney Rd, Kings Park NSW 2148
Ph: 02 9912 5000
E: sales@powerlite.com.au
W: www.powerlite.com.au

Stand no: 54

Powerlite Generators has been manufacturing and supplying power and lighting solutions throughout Australia since 1964. Our product range consists of: Powerlite's Portable Generators the choice of construction, hire, emergency services and government. Podlite LED Lighting Towers, with the revolutionary Podlite Tri LED assembly. Podlite 300 LED offers the ultimate 360° Worklight. Ritelite LED portable Lighting Towers and Worklights. RoboSign, remote controlled STOP/SLOW traffic control system. Powerlite, Kubota, FG Wilson & Powerlink Diesel Generators acoustic weatherproof enclosed. Goliath Professional Worklights the number one choice of emergency services and trades people. Powerlite Powerweld Welder Generators and Powersafe Distribution Boards & Extension Leads.

Pramac

PO Box 2341, Sunnybank Hills QLD 4109
Ph: 0407 240 648
E: aldwin.king@pramac.com
W: www.pramac.com

Stand no: 68

Pramac Group is a young and dynamic global brand that services and supports a global market. In the field of Power Generation, PRAMAC offers solutions for every kind of power supply demand: from our portables to

Making Inefficiencies Extinct

Booth 51 - Come and see us

our industrial power supply either for Stand-by, Prime Power and Rental applications. PRAMAC not only designs, manufactures, distributes and supports a complete range of Portable, Stationary and Rental Generators from 1 to 3360 kVA as standard production, but we also provide tailored solutions that can be adapted to every specific requirement. Our participation in the international MOTO GP as a Ducati factory supported team, is an example of our engineering, logistical and operational excellence.

QuickAlly Scaffolding and Access Solutions
876 Kingsford Smith Dr, Eagle Farm QLD 4009
Ph: 07 3877 2811
E: admin@quickally.com.au
W: www.quickally.com.au

Stand no: 73

At QuickAlly no project is too big or small for our dedicated team of professionals. We pride ourselves on providing cost effective, quality solutions for any project. Our staff draw on years of industry experience to deliver on time every time assuring you of productivity and safety. QuickAlly Scaffolding & Access Solutions is committed to providing exceptional value to clients by ensuring the highest level of service, industry leading warranty and the finest quality products and support available 24/7. All products are designed, manufactured in Australia and tested under strict quality assurance systems in accordance with Australian Standards.



R&J Batteries

852 LaTrobe St, Ballarat VIC 3350
Ph: 0488 066 939
E: industrial@rjbatt.com.au
W: www.rjbatt.com.au

Stand no: 21

R&J Batteries import and distribute some of the world's leading Deep Cycle Batteries and Battery Chargers including JCI manufactured Flooded 6-Volt and 12-Volt full range and FULLRIVER'S highest quality VRLA technology in both AGM and GEL fully sealed and maintenance free options. R&J Batteries provide the highest level of customer service including advanced technical and product training for all battery and battery charging applications. R&J Batteries also distribute the highest quality automotive and industrial range of Delkor and ACDelco cranking/starting batteries to complete the full range of batteries for any application.

Red Roo Sales & Service

41-43 Keysborough Ave, Keysborough VIC 3173
Ph: 03 9769 0455
E: james.kerr@redroo.com
W: www.redroo.com

Stand no: 154

Red Roo is a manufacturer of a comprehensive range of environmental equipment from chippers and shredders for the home gardener to large capacity commercial stump grinders and wood chippers for commercial customers. Built to withstand the most demanding conditions Australia has to offer, Red Roo products incorporate leading edge technology and engineering to perform safely, efficiently and effectively. All our equipment is designed for longer life and better return on investment. Red Roo has a proven reputation in municipalities, industry and the rigorous hire and rental business, for low maintenance, reliability, value and return on investment.



Redstar – Silver Sponsor

1828 Ipswich Rd, Rocklea QLD 4106
Ph: 07 3339 8517
E: kevin.ennis@redstarequipment.com.au
W: www.redstarequipment.com.au

Stand no: 134

REDSTAR is a specialist fixed-speed diesel equipment company providing generators, compressors, welders, lighting towers, parts and servicing to many of Australia's largest rental, construction, industrial, mining and government organisations. Our complete lines of industrial standby, prime-mobile and prime-fixed generators range from 6KVA to over 3250KVA, and we offer the most durable and fuel efficient options available across all of our products. Now independently owned by the CFC Group, Redstar is also independent of engine manufacturers, meaning we provide unbiased advice to our customers. With service solutions including fabrication, customisation and specialist components, we work with our customers to meet their needs and exceed their expectations. Our equipment is backed by our exceptional parts and service departments. We have expert technicians in Brisbane, Perth and mobile across Australia for emergency support, available 24/7-365.

RIES Equipment

PO Box 136, Bulleen VIC 3105
Ph: 1800 338 114
E: info@riesequipment.com.au

W: www.riesequipment.com.au

Stand no: 8

Rental Industry Equipment Supplies is a hirer's supply company catering to Event and General Equipment Hirers. For the event industry we supply Heatlie catering equipment, marquee pegs and associated pegging items. Catering equipment parts and accessories, cable ties, chafing fuel and compliant test and tag equipment. For general equipment hirers we have a diverse range from post hole augers, Torquemate cutters, floor cramps, wallpaper steamers, animal traps, Intex plasterboard tools and lawn rollers. Floor board lifters, consumables, wearparts, points, chisels and blades. We also offer a calibration service for testing and tagging equipment. We consolidate freight to keep your costs down.

Shelter Tent Manufacturing Co

No 1 Huanghe section, Songshan Rd, Chaotian Industrial Zone, Shilou Town, Panyu District, Guangzhou China
Ph: 8620 6660 3258
E: nicole@shelter-structures.com
W: www.shelter-structures.com

Stand no: 71

Shelter Tent Manufacturing Co was founded in 2003 with the sole mission of providing the highest standard in clear span tent manufacturing at a competitive price point. The company is headquartered in Beijing, while its main production facility is located in the seaport of Guangzhou to better support Shelter's world-wide distribution. Shelter Tent specialises in the most innovative tent structure designs and maintains some of the most advanced production machinery including CNC machines and computerised tent vinyl cutting machines. We pride ourselves on offering turn-key solutions to the most discerning clients across the globe.



Skyjack Australia

4 Coates Pl, Wetherill Park NSW 2164
Ph: 02 8786 3200
E: jcranmer@skyjack.com
W: www.skyjack.com

Stand no: 49 + A13

Skyjack proudly provides quality engineered, simple and reliable access and material handling equipment globally, so companies can maximise utilisation and their return on investment. All Skyjack's products are designed to be easy to service and maintain. By keeping design simple and using proven technology, the reliability and ease of service is common to all the company's products. Because of

Point of Rental
Software

Rental Essentials

Rental Expert

Rental Elite

Constantly innovating for your success.

Visit us at HIRE 16, stand #72

www.point-of-rental.com.au

this, Skyjack machines offer the rental industry's best life cycle value through low cost of ownership, ease of service and maintenance, while retaining high residual values. Common components across model groups are used wherever possible, reducing the number of service parts needed to maintain Skyjack products. The use of 'off the shelf service' parts, as opposed to custom designs, means replacing or repairing components is easy and cost effective. Today this proud heritage, and our easy to do business with attitude, represents a product range and company that is simply reliable.

Spanit

PO Box 163, Para Hills SA 5096
Ph: 08 8396 0467
E: ian@spanit.com.au
W: www.spanit.com.au

Stand no: 32

Spinefex

1/42 Clinker St, Darra QLD 4076
Ph: 07 3202 7383
E: james@spinefex.com.au
W: www.spinefex.com.au

Stand no: 147

Spinefex, known for our Lifeguard Power Distribution System, have been engaged in the portable power distribution and electrical safety market since 1997. With an emphasis on quality and safety the Lifeguard system provides consumable power solutions in a weatherproof, user friendly plug and play type system, all protected by quality safety devices. Fully customisable and utilising high quality European componentry the Lifeguard system provides safe, practical and compliant power distribution along with compatible lighting solutions to meet all your requirements. Lifeguard has far reaching applications.

Spitwater Australia

953 Metry St, North Albury NSW 2640
Ph: 1800 Spitwater (1800 774892)
E: info@spitwater.com.au
W: www.spitwater.com.au

Stand no: 87

Spitwater Australia offers special deals to the hire industry on a wide range of highly specialised cleaning and associated equipment including: Spitwater high-pressure water cleaners with electric, petrol and Diesel-powered models using both cold as well as hot and cold water; Spitwater heavy-duty industrial vacuum and shampoo cleaners for both dry as well as wet and dry operations; Jetfire LPG & Diesel industrial portable heaters and dryers. Spitwater have distribution throughout the country providing world class products and back up to the hiring industry.

Stihl

5 Kingston Park Court, Knoxfield VIC 3180
Ph: 03 9215 6666
E: andrew.batson@stihl.com.au
W: stihl.com.au

Stand no: 20 + G15

STIHL Australia's Key Accounts Team will be at HIRE 16 promoting the benefits of the STIHL Partnering Program and how it's a perfect fit for the hire and rental industry. As always the STIHL stand will be packed with the latest innovations from Australia's number one selling brand of hand held outdoor power tools. New for 2016 is the product test zone where you can try our new products first hand. Drop by and enter your business card in the draw for your chance to win \$500 to spend at your local STIHL store.



Sullair Australia

324-332 Frankston-Dandenong Rd, Dandenong South VIC 3175
Ph: 03 9703 9078
E: Lance.Maizey@sullair.com
W: www.sullair.com.au

Stand no: 24

Sullair Australia is a subsidiary of Sullair LLC, recognised globally as a leading supplier of stationary and portable air compressors along with compressed air treatment equipment and vacuum systems. Having over 40 years' experience in the Australian market has allowed Sullair Australia to develop products to meet the specific needs of the Australian market. Sullair's Champion and ShopTek range of stationary electric compressors and diesel portable compressors are used by customers ranging from small workshops through to some of the nation's largest manufacturing and mining operations.



Texada Software

10/29 Cinderella Dr, Springwood QLD 4127
Ph: 0731 071 614
E: gschwede@texadasoftware.com
W: www.texadasoftware.com

Stand no: 153

Texada Software is a specialist provider of software solutions for equipment, party and event hire management. Designed to drive your business, Texada's SRM application provides end-to-end asset management from acquisition to

hire, maintenance and disposal. SRM also includes customer management, accounting and financial reporting functions. Brand new for HRIA 2016, Texada is introducing InSight, and FleetLogic. InSight is a powerful web based reporting tool that makes complicated business data easy to interpret and digest. FleetLogic is a flexible mobile platform for paperless asset logistics management, field service and yard inspection and maintenance processes. Come visit us to learn how our products can revolutionise your business!

Titan Hoarding Systems Australia

72-74 Zillmere Rd, Boondall QLD 4034
Ph: 0400 727 658
E: christie.m@t-h-s.com.au
W: www.t-h-s.com.au

Stand no: 45

Twenty years ago, improvements in construction safety were desperately needed resulting in the development of freestanding temporary fencing and hoardings for worksites. Today, TITAN has developed and patented many systems that have revolutionised this 20 year old innovation. TITAN leads the way by increasing flexibility, safety and the efficiency of hoarding and fencing installations. The TITAN Hoarding System is project proven; free standing; with zero fixing required. TITAN provides the same structural certified outcomes regardless of where it is installed. The ability for TITAN to be modified or relocated while maintaining engineer certification makes TITAN the essential hoarding system.



Toro – Silver Sponsor

PO Box 40, Kilkenny SA 5009
Ph: 0437 791 886
E: sally.wade@toro.com
W: www.toro.com.au

Stand no: 41 + S3

Toro Australia is a leading supplier of construction, mowers, turf care equipment that caters for golf, turf, sports field and grounds, professional landscape contractors, residential and hire and rental markets as well as a leading supplier of irrigation products to the landscape, agricultural, turf care and domestic garden markets. Toro construction products are the most versatile and reliable on the Australian market. The machines give greater capability and effortless manoeuvrability, ranging from Compact Utility Loaders,

ACTIV'Shield

ESCAPE FROM A CRUSH HAZARD

Haulotte  Tel: 1300 207 683 www.haulotte.com.au



now available with vertical lift loader arms in selected models, Trenchers, Stump Grinders to Brush Chipper. Designed by Toro engineers for professionals, these machines are innovative, rugged and dependable.

Total Sanitation Solutions

30 Norbury St, Coopers Plains QLD 4108
Ph: 0417 748 532
E: scott@totalsan.com.au
W: www.totalsan.com.au

Stand no: G29 & G33

TSS (Total Sanitation Solutions) is Australia's leading 'one stop shop' for the portable toilet hire industry. TSS supplies premium quality portable toilets, portable showers, handwash stations, disabled access toilets, purpose built toilets on trailers, toilet and shower combos, and VIP trailer units. TSS manufactures all types of amenity buildings including our industry recognised 16 pan toilet block and luxury VIP Building. TSS is also a supplier of vacuum tanks ranging from small light 1500 litre 'ready to run' unit, up to 30,000 litre tankers. TSS supply the industry with WALEX deodorisers, sanitisers, washdowns, graffiti remover, degreasers and cleaners.

TRS

3 Distillers Pl, Huntingwood NSW 2148
Ph: 02 8822 8172
E: melissa@trsservice.com.au
W: www.trsservice.com.au

Stand no: 22

Over the last 35 years TRS has become recognised as a leader in refrigeration services and support for the Australian refriger-

ated transport business. Our growth has come from providing refrigerated road transport clients with the products and services they need to run their businesses efficiently and profitably. TRS are proud suppliers of Thermo King, Anteo, Thermaxx Truck Bodies, Car Oil Mobility Lifts, Cold Cubes and Govi Mobile Coolrooms. We have locations in Brisbane, Sydney, Adelaide and recently Melbourne.



TVH Australasia

735 Boundary Rd, Richlands QLD 4077
Ph: 07 3717 3241
E: a.castro@tvh.com.au
W: www.tvh.com

Stand no: 4

TVH Parts is your all-round supplier of quality parts and accessories for material handling, industrial vehicles and agricultural equipment. We continually expand our product range by following new trends and looking for new partnerships, to make sure you will find absolutely everything you need right here at TVH. With over 70,000 stocked references and 900,000 known cross references you will find quality parts for your aerial work platforms such as joysticks, printed circuit boards, switches, chargers, not-marking wheels and much more. Our technically-skilled employees will assist you plus with our web shop and online support you have access 24/7 to our huge range of parts and accessories.

Vermeer



Vermeer Australia – Silver Sponsor

1 Fulcrum St, Richlands QLD 4077
Ph: 1800 620 720
E: sales@vermeer.com.au
W: www.vermeer.com.au

Stand no: 37 + S1

Vermeer Australia is part of Vermeer Corporation, a manufacturer based in Pella, Iowa with a worldwide network of over 3,000 employees in 60 nations. Vermeer Australia delivers real impact on our customer's productivity and profit through the provision of high-quality construction, environmental and surface mining equipment and the support of a nationwide network of factory trained and certified dealerships. Our hire industry products are developed with a strong focus on performance, reliability, ease of use and operator safety. We understand your customers expect effective equipment that is easy to use and Vermeer offer a large range of products which exceed this expectation.

Wacker Neuson

31-41 National Dr, Dandenong South VIC 3175
Ph: 03 9549-0000
E: greg.monk@wackerneuson.com
W: www.au.wackerneuson.com

Stand no: G28



HIRE INDUSTRY EXCELLENCE AWARDS

BEST NEW PRODUCT

Now in three categories – General • Access • Events

The Best New Product Award at the annual Hire Industry Excellence Awards recognises innovation, design, and quality in all the equipment and services entered in the category.

Selected by a panel of two judges, and voted on by HRIA member visitors to the show, the Best New Product of the Year is also determined on the basis of how useful the equipment and services will be for hire companies.

The category recognises true hire industry excellence and pays tribute to the exceptional standards of service and innovation displayed throughout the sector.

The following advertorials display some of this year's entries.



LiftSmart (Material Lifts)

LiftSmart manufactures the next generation of Material Lifts providing improved specifications, features, durability and performance.



Features include:

- Best-in-class load capacities and US made dual-handle, shift-on-the-fly, two-speed winch, that will raise the load twice as fast as competitive models.
- Robust, construction-grade cast metal cable pulleys, heavier gauge aluminum extrusions, and US made non-marking casters proved far superior durability and extended service life.
- New and innovative features including the Smart-Set 'pin-less' height adjustment system for the steering and loading wheels and Clear-Path, providing foot clearance between the rear transport wheels.

Providing an exceptional warranty and made in the USA, LiftSmart is enthusiastic about its entry into Australia and New Zealand.

Products include:

- CLA Pro Series
- MLC Construction Pro Series
- MLI Industrial Pro Series
- MLM Mini-Pro Series

LIFTSMART

T: 07 3219 5130

www.accessservice.com.au

BOS Quick Build Containers



BOS Quick Build Containers offer a unique storage solution with the advantage of on-site assembly and connectivity. They are the perfect answer to awkward locations with limited access.

BOS portable storage units can be delivered flat packed to site and assembled literally within minutes. Quick, tool free assembly and dismantling make BOS Containers the perfect solution for tight locations.

Made of 20 gauge steel they are completely weatherproof, theft proof and secure using state of the art 'Best Point Technology' to join components together. BOS Quick Build containers are a versatile solution for building sites, storage, warehousing, farming and much more.

The containers offer flexible solutions to meet changing requirements. They can be joined, stacked and dismantled as needed and can be used both indoor and outdoor as a storage unit, warehouse or lockable container. They can be assembled at the back of a building site or in an underground carpark. BOS Containers come in various sizes and with a range of accessories including access ramps, shelving, powder coating, sky lights and more.

Voted number one for storage containers in Europe in 2015 BOS Containers will be landing in Australia in March and available for hire or purchase through Aim Hire.

T: 03 9720 4455
www.aimhire.com.au



Crossback Chair



Wooden Crossback Chair

Metal Crossback Chair

The Crossback chair is trending as the latest in wedding and event seating. The Crossback is a classic provincial French design which combines elegant lines and a rustic finish.

This wooden classic comes in either a rattan seat or wooden seat, wood or metal crossback and is available in dark vintage or natural finish.

New to the Alloyfold range in 2016, this chair is a point of difference to any rental inventory.

T: 1800 287 025
www.alloyfold.com **alloyfold.**

ATHENA Bi-Leveling Scissor

Athena is a world first and an Australian first.

The patented self-leveling technology instantly increases safety on slopes and difficult terrain.

Athena will self-level with the use of just one button (by up to 20 degrees on both the X and Y axis).



Athena is available in 6m or 8m working heights in diesel or petrol versions with hybrid models arriving this year.

Athena makes work sites safer and is also time saving, versatile and fun to operate.

Hire companies can expect:

- Long term hires
- High demand
- Easy inductions
- Unequaled ROI

Athena is like having a compact slab scissor and an all terrain scissor in one unit, however it does not require outriggers and can traverse at height, making it a versatile scissor-lift.



T: 03 9796 4254 **www.aspacgroup.com**

Tailored compaction solution

Conplant has developed new technologies in-house in direct response to a customer seeking a solution to a high risk compaction application. The two new technologies work well together, but can also work independently.

By working closely with the customer to gain a deep understanding of the application and associated challenges, Conplant solved the immediate problem and offered solutions to maximise productivity and job quality.

The solution integrated both new and pre-existing technologies which included:

1. Manned and remote control system (dual use). Rollers in the Ammann range can now be operated normally (manned) or in remote control with the flick of a switch. Primarily this is to improve operator safety for high risk applications. This system is now commercially ready;
2. Edge control system (with automated steering control). This is primarily an automated steering system that is an early functional prototype phase; and
3. ROPS2 Roll Over Preventative System.

This is a good example of where Conplant delivered a tailored solution to meet and exceed the customer's expectations.



T: 1300 166 166 **www.conplant.com.au**

SX-150 boom lift

The SX-150 boom lift benefits from 15 years' experience in the development of large booms which includes the pioneering X-Chassis design – an important technological breakthrough.

Thanks to its compact footprint for a machine in this category, a minimal tail swing of 1.06m (3ft 6in) and unrestricted 340kg capacity across its full working envelope, in many cases the SX-150 lift offers a conveniently efficient and cost-efficient alternative to truck-mounted booms.

On the jobsite, the cost-efficiency of the SX-150 boom lift is further accrued. This is particularly evident in the case of projects planned over several days. Combining the choice of four working heights, with a market-beating 340kg load chart offering an impressive horizontal outreach of 21.34m (70ft) at 36.6m (120ft), one SX-150 unit provides two workers and their tools the ability to handle tasks that often require the support of several machines.

"In our highly competitive market, the SX-150 lift is just what rental companies are looking for to meet increasing demands in the 30m (100ft) to 48m (157ft) range," Brad Lawrence General Manager, Terex AWP said.

"This new model combines everything our customers prefer in Genie equipment, with new features we are convinced will also support their profitability and reduce total rental cost of ownership."



Genie
A TEREX BRAND

T: 07 3456 4444
www.terex.com

ProConnect Pump Removal System



Being able to quickly change a pump on the job site can be the difference between a productive day of paint spraying and one spent waiting on replacement parts or behind the wheel taking your sprayer to be serviced.

Thanks to the ProConnect Pump Removal System, Graco makes pump swaps fast and easy.

Fast and Easy on-the-job Pump Replacement System:

- Available on small and midsize electric sprayers
- Spare pump available at any Graco distributor
- Never wait for pump repair again
- Eliminate drive time and repair cost



In three simple steps, you can remove the pump on Graco's small and midsize electric sprayers.

No more time wasted or money lost to labour charges on pump repairs – with a spare pump at the ready, you'll never have a down day.



T: 1300 503 610
www.phillro.com.au

Röder Equitent products



Launched in October 2015, H-Line Structures' Röder Equitent products can accommodate temporary or permanent horse training facilities, including lunging halls and stable needs.

Equitent products are flexible, versatile, economical and trustworthy – allowing horses to move and exercise in optimal and safe conditions, regardless of the weather. Mobile and sophisticated design allows our products to be assembled in a short amount of time at almost any location. We can custom design to suit specific needs and freight to any location. Delivery and installation is fast, uncomplicated and does not require specialised equipment.

The Equitent Riding Hall is available in different widths, lengths and heights. In contrast to conventional halls, its mobile and sophisticated design allows this system to be assembled in a short amount of time at any location. The translucent PVC roof covers and wind break nets make the room climate comfortable at any time and in all kinds of weather conditions. The Equitent Lunging Hall is available in three different sizes, however other sizes and larger clearspan widths are also available on request. It has a range of accessories such as lighting, irrigation systems and ring fences.

Our high quality Equitent products are engineered to meet Building Codes of Australia and conform to regulations.



T: 07 4659 1000
www.hlinestructures.com.au

Optimum 8 AC

Haulotte launched the Optimum 8 AC in November 2015 – the first manufacturer to implement a smart counterweight on a scissor lift.

The unique counterweight design provides safest access to the platform by providing entry steps that are virtually indestructible, fully integrated and come with an anti-slip surface.

Haulotte is the first major player to offer Direct Electric Drive with brushless AC motors. The heavy-duty brushless AC motors are extremely durable, reliable and offer excellent efficiency and exceptional torque providing fast, smooth and progressive driving.

Being virtually maintenance free (no brushes to be changed), they offer lower maintenance and running costs than brushed DC motors or hydraulic driving systems.

Optimum 8 AC incorporates a simple to use yet technologically advanced onboard diagnostic system 'Acti'v Screen' to simplify troubleshooting for operators and maintenance technicians.

Optimum 8 AC is the only scissor lift in its class to have forklift pockets that allow the machine to be lifted laterally. This unique design allows stable and safe lifting by keeping the centre of gravity closer to the forklift.

Optimum 8 AC comes with a full range of options and is the only machine in its class 7 and Panel Carriers.



T: 03 8710 1000
www.haulotte.com



Hose 2 Go – portable water



Makinex recently launched the NEW Hose 2 Go – A constant pressure water supply unit ideal for the hire and rental industry as a dust suppression tool and portable water supply.

The Hose 2 Go has a constant flow of water that allows you to suppress the dust when cutting, core drilling and grinding concrete.

It's different to every other product on the market because it provides a constant water flow without the use of a pump, battery or electronics.

An easy to use dust suppression tool and portable water supply, which has a handle with two easy carrying positions.

The Hose 2 Go is Australian designed and has been in development for four years. Makinex believes this is the most innovative product to hit the hire industry for a long time.

The Hose 2 Go is so simple:

- No pump which means greater reliability;
- No complicated electrics to breakdown;
- No battery to go flat and expensive replacements;
- No need to manually pump to get the water pressure you need;
- 14 litre capacity and up to 30 minutes of constant flowing water.



T: 1300 795 953
www.makinex.com.au

MAN'GO 12 AWP

The MAN'GO 12 aerial work platform is a new concept in platforms, combining the benefits of articulated and telescopic platforms. Originally designed for rental operators, it is also suited to professionals who need to get people up to 12m.

Compact and suited for all-terrain, it can navigate congested work sites and tight storage spaces. Collapsed, its small chassis allows easy storage, and simple controls and upkeep gives performance levels to impress.

- Capable of hosting two people or 230kg;
- EWP operator licence not required since boom length is under 11m;
- Features redesigned lifting structure driven by a single arm and a system of fulcrums which improves speed of movement;
- The transmission on the wheel engines retains all-terrain character through control and management of hydraulic oil in the 4-wheel engines and differential hydraulic locking;
- The engine in the chassis gives a lower center of gravity, making the machine lighter.



T: 02 9517 3174
www.manitougroupp.com

HeightRider 28 Hybrid 4x4

A new generation of environmentally conscious work platforms from Niftylift



The HeightRider 28 (HR28) Hybrid Four-Wheel-Drive (4x4) combines advanced power-source technology with efficient 4x4 and delivers outstanding performance from a compact and low-weight design.

On Diesel, the HR28's Hybrid system can automatically utilise its electric motor to boost power when needed. This allows the HR28 Hybrid 4x4 to operate with a smaller engine, reducing fuel consumption and its exhaust purification system then further reduces CO/NOx, particulates and noise emissions.

The HR28 Hybrid 4x4 can also operate on battery alone, making it ideal for indoor, quiet or clean applications. Diesel Re-Gen recharges the batteries without a mains power source and a fast charge is achieved whenever the machine is idle and the engine is left running.

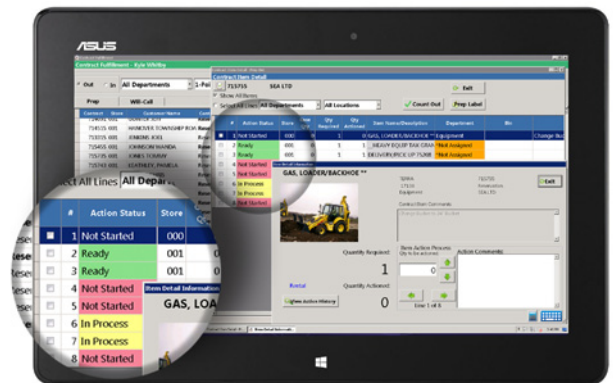
The HR28 Hybrid 4x4 also incorporates Niftylift's multi award winning SiOPS safety system. SiOPS eliminates sustained involuntary operation by instantly stopping machine movement if the operator is pushed onto the control console.

- Working Height – 28m
- Platform Height – 26m
- Working Outreach – 19m
- Minimum Weight – 14,500kg
- Gradeability – 40% (22°)
- Power – 35kW Hybrid Power



T: 02 4964 9765
www.niftylift.com.au

Contract Fulfillment



Point of Rental's Contract Fulfillment Module provides rental businesses with streamlined processes and increased productivity. By combining real-time contract processing with the flexibility of mobile tablet devices, the module replaces load slips and prep reports, making it easy to fill contracts accurately and efficiently.

Now, even out in the warehouse, teams can view existing contracts and mark items as prepped. When contract modifications are made, such as item additions, subtractions and removals, the Action Status indicates changes, instantly alerting the warehouse. In the contract closing process, returned items can be marked as returned but not physically counted or 'counted in' to show inventory is complete.

Warehouse staff can document shortages or damages easily and create notes that are communicated in real-time to sales staff. Immediate updates mean reduced customer wait times and the ability to recover costs associated with loss or damage. The Contract Fulfillment Module gives a real-time view to the operation, speeding up final billing and cash flow.



T: +1 972 602 9819
www.point-of-rental.com

Podlite 300 LED

Introducing the all new Podlite 300 LED, designed and manufactured by Powerlite. This ultra-portable lighting solution offers the ultimate 360° work light. Instant illumination, no warm up or cool down required saving time and money.

From the ground up the patent pending Podlite 300 has been put through vigorous testing, making it the most innovative and durable non-blinding work light available allowing it to function in all manner of environments.

The Podlite 300 is suitable for DC & AC applications consuming only 315W between 18-60VDC ensuring an impressive 130 Lumens per Watt and can be used indoor and outdoor.

With CE Certification and certified weatherproof rating of IP66 which prevents dust and moisture from entering the assembly, the light output on the ground will always remain constant.

Paired with a robust adjustable tripod stand this makes the Podlite 300 the most universal area light covering a wide range of applications. Optional 360°/180° illuminations switch allowing the user to switch off half of the Pod for light sensitive areas.



Powerlite
POWER • LIGHTING • TRAFFIC

T: 02 9912 5000
www.powerlite.com.au

185 Portable Air Compressor



Sullair Australia introduces the all-new 185 Portable Air Compressor. Manufactured with Sullair's superior rotary screw technology, the 185 Portable comes with a direct drive LS14 air end that delivers a total of 185cfm at 100psig. Couple this with a Kubota turbo direct injection diesel engine and you've got a reliable, efficient portable air compressor suitable for a variety of general and civil construction applications.

Featuring a fully bunded design to contain 126% total fluid volume, the 185 Portable also offers unique features such as:

- Three stage air filters for both the air end and the engine;
- Ergonomically designed spin on/off oil separator element;
- Cost effective and environmentally designed oil filter;
- Custom designed protective guards and heat shield;
- Full load operational capacity in 50°C ambient temperature.

Offering complete easy access for service and maintenance, the 185 Portable also offers extra efficiency, consuming 19% less fuel than its predecessor model.

With all these features in mind, it's no wonder the new 185 Portable sets a new benchmark for other portable air compressors in its class.

T: 03 9703 9078
www.sullair.com

SULLAIR
Always air. Always there.™

TITAN Eco Temporary Fencing

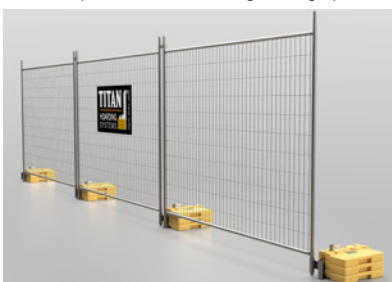
TITAN Eco, the first temporary fencing innovation in 25 years. Simple to erect, highly versatile and best of all, eliminates trip hazards.

A true breakthrough in temporary fencing design. Perfect for airports, public spaces such as railway stations, shopping centres, demolition sites and anywhere construction is taking place close to the public. The system can quickly and easily change configurations by reversing the counterweights creating clear unobstructed access.

Increasing its strength for greater wind loading is as easy as adding additional counterweights and an eco brace. Safe, strong and certified to Australian standards, Titan Eco Temporary Fencing is the latest weapon in the quest for safer sites.

TITAN Eco temporary fencing - Impact rated - Engineer Certified AS 4687.

- Wind rating capable.
- Standard 2400mm wide x 2100mm high panels, a free standing design without floor fixings or bracing for impact.
- Zero trip hazard for pedestrians due to the patented TITAN counterweight design.
- Tamper evident seal capable.
- 500mm deep x 300mm wide counter weights, each is 13kg average, designed to be stackable so you can add & remove weight as required.
- TITAN patented counter weight design provides a durable and stable platform.



- Two points of secure contact, very quick and easy to assemble, modify or remove.
- OH&S, QA and site specific engineer's certification and specification documentation provided for every site.

TITAN
HOARDING
SYSTEMS
AS4687 Engineer Certified

T: 1300 046 273
www.t-h-s.com.au

TX 1000 Compact Utility Loader



Toro TX 1000 compact utility loader is designed with Toro exclusive vertical lift loader arms to transport and lift heavier loads. Its 453.6kg rated operating capacity means it can handle big loads and still be lightweight and nimble. When the loader arms are fully extended, the hinge pin measures 2.06m from the ground to allow the TX 1000 to reach over the side of 23m² dumpsters and 1000kg trucks.

The vertical lift loader arms keep the load closer to the machine to allow operators to lift more weight with greater confidence. The vertical path of the lift arms is also exceptional in vertical applications with an auger or concrete breaker attachment.

The Toro-exclusive traction control design is intuitive and effortless, providing operators all-day productivity. Other operator-centric features include thigh and hip padding in the operator's station for a comfortable experience and an auxiliary foot control integrated into the suspended platform, which frees the operator's hands to focus on ground speed and attachment positioning.

Equipped with 1300cc Kubota D1305 three cylinder diesel engine (24.8hp), the TX 1000 is available in a narrow track and wide track model, each weighs 1,183.8kg and 1,265.5kg respectively and can lift more than any compact utility loader in the category.

TORO

T: 03 9580 7355
www.toro.com



HIRE17

10 – 11 May, 2017

We're going to

CAIRNS in 2017

*Australia's only hire
industry expo!*

- Networking
 - Education
 - Industry Focus
 - Technology
- For:
- Events
 - General Hire
 - Access



Hire and Rental Industry Association Ltd T: 02 9998 2255

www.hireconvention.com.au